



Hewlett Packard
Enterprise

Automated Ops Management, Payment Monitors, Smart Analytics

NYTUG Meeting 2023



Vedant Shrivastava (Vito)

Product Lead, Web ViewPoint Enterprise



April 2023

Live & Analytics – Integrated Solutions

Operations



Automated Operation Management Solution

Web ViewPoint
Enterprise

Performance

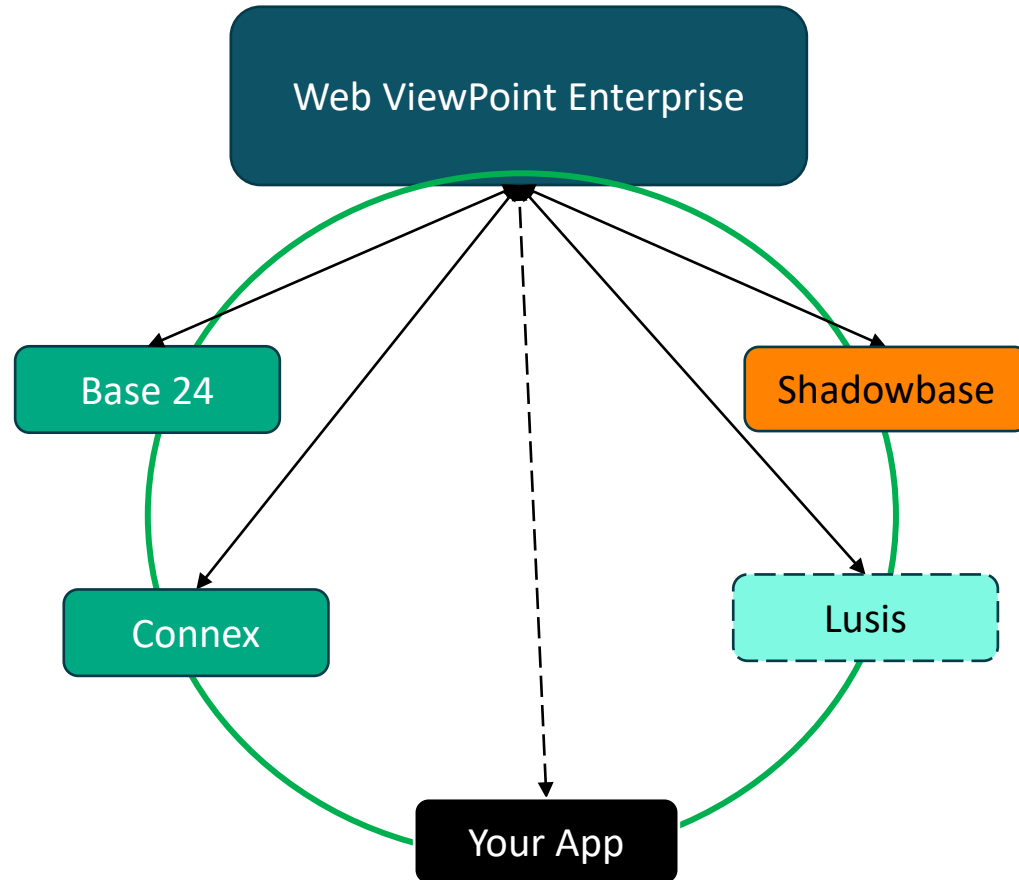


Performance Analytics Solution

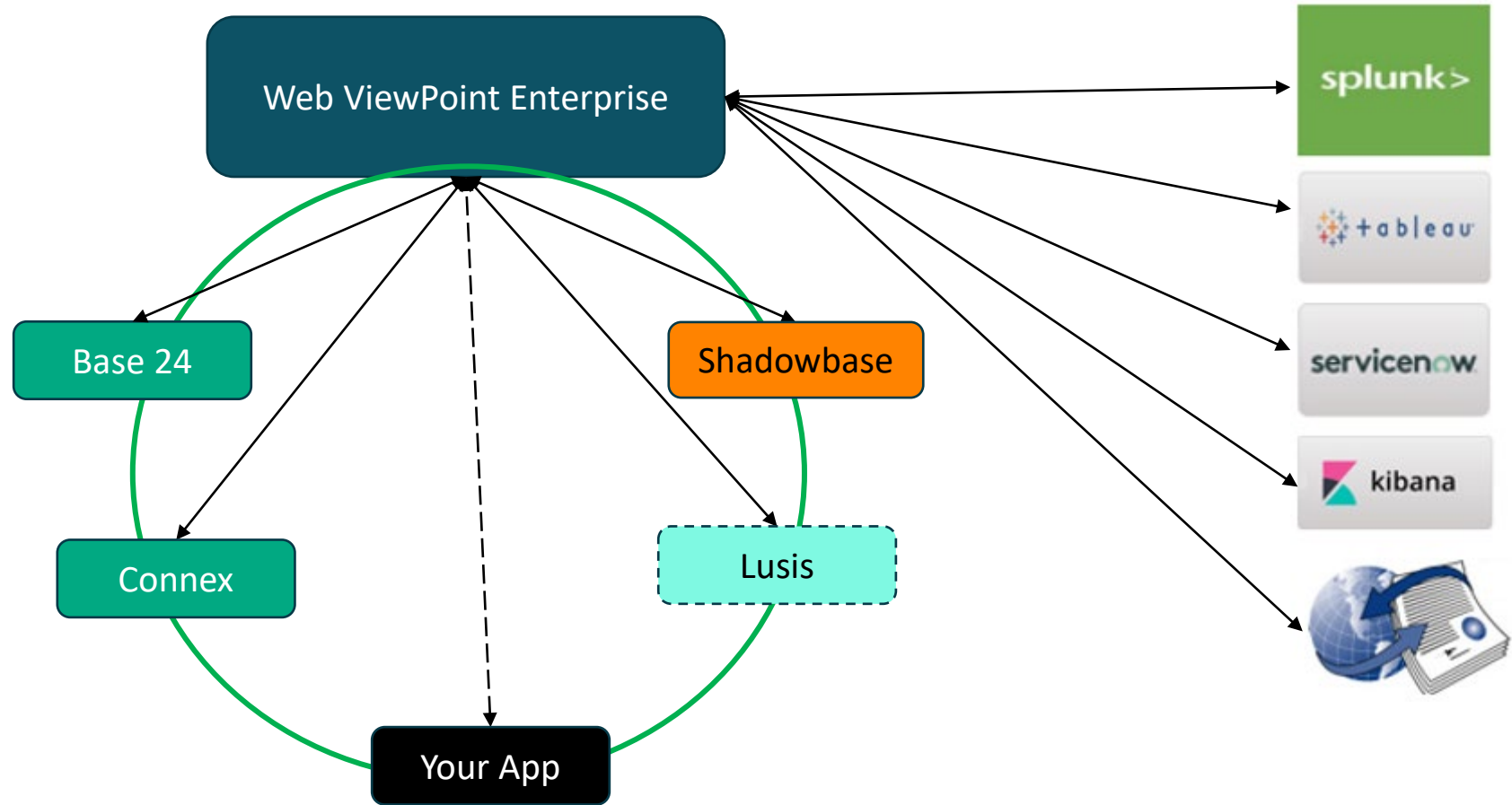
Local Analyst

Remote Analyst

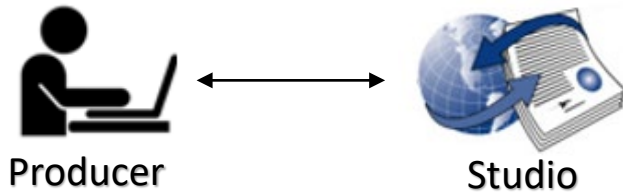
Open Architecture



Power of Integration



Be Creative: Studio



Add Product [X]

Name:

ID:

Product Description:

Version:

Version Description:

Upgrade Options: [v]

Owner:

SSID:

* Required

Web ViewPoint Enterprise Version: WVPvABCDvNNO [?]

About
Created at 10:30 PST on June 3, 2021 Published at 18:23 on June 18, 2021

Assigns
Assigns: Params:

Params
Data Files: Object Files:

Files
Stat. Objects: Stat. Metrics:

Statistics
- Objects
- Metrics

To Install
Readme Created at 11:23 on June 16, 2021

To Manage
YAML Created at 13:22 on June 16, 2021
PPAK Uploaded at 13:48 on June 18, 2021

Prepare to Publish

Web ViewPoint Enterprise Version: WVPvABCDvNNO [?]

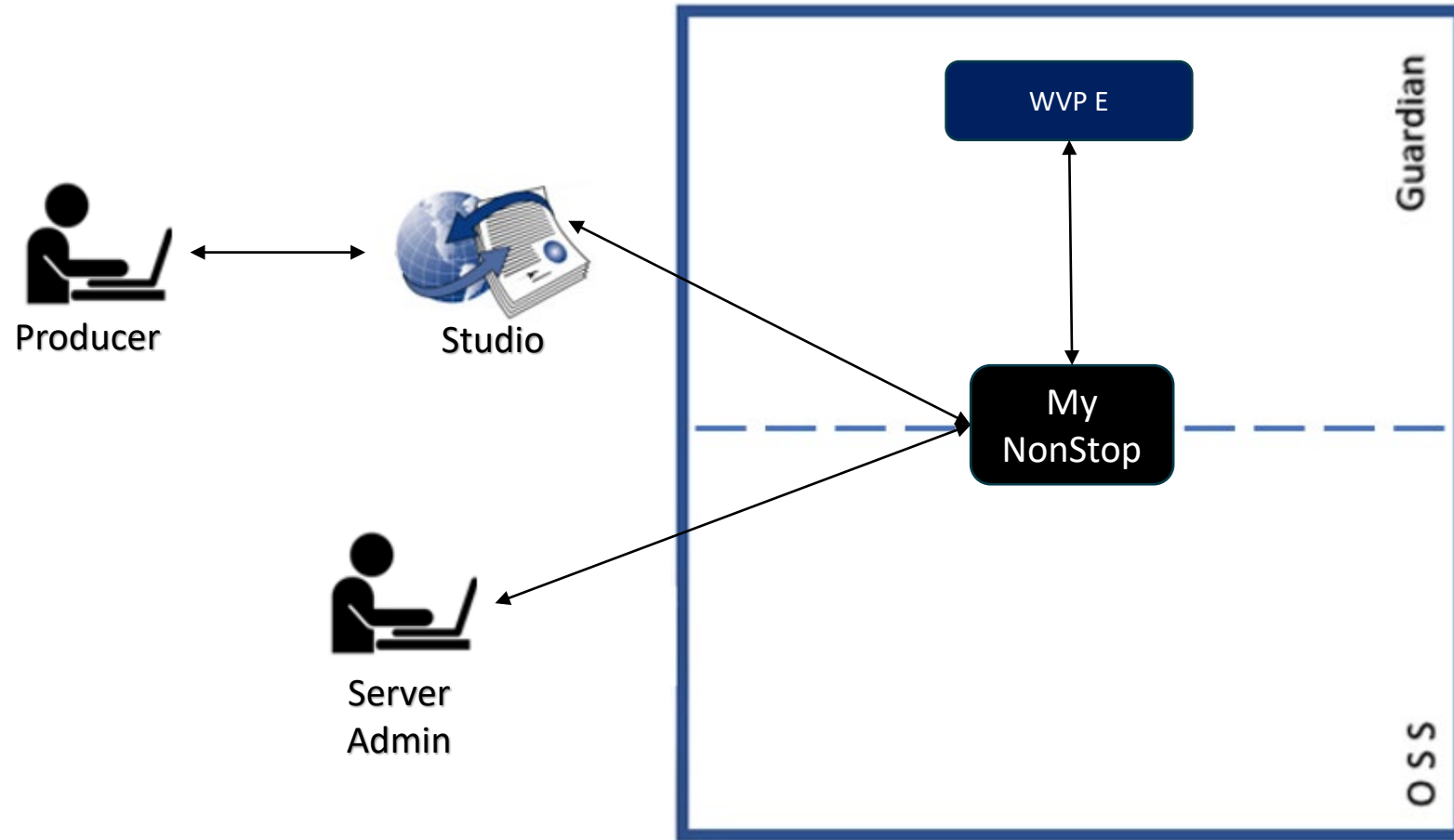
1. Preview Readme 2. Download YAML 3. Upload PPAK

Choose file to upload

Or drag and drop it here



My NonStop



My NonStop – Shop and Install

MY NONSTOP





Shop & Install

Manage

Shop & Install

Studio NonStop My PC

Server: \RADVNS1 - 080627 Add filters...

Server	Producer	Product	Version	Published Date	Installation Date	
\RADVNS1	Gravic	Shadowbase Monitor	L01	2021-11-03	2021-11-03 13:14:30	Installed  
\RADVNS1	IDELJI	Web ViewPoint Enterprise	L01AAR	2021-11-03	2021-11-03 11:42:53	Installed  



My NonStop – Manage Products

MY NONSTOP

Shop & Install

Manage

Manage

Server: \RADVNS1 - 080627 Product Status: All Active Inactive

Server	Product	Version	Installation Subvol	Installation Date	Status	
\RADVNS1 - 080627	Shadowbase Monitor	L01	\$ISERV1.WVPVED	2021-11-03 13:14:30	Active	Start Stop Print Edit Delete
\RADVNS1 - 080627	Web ViewPoint Enterprise	L01AAR	\$ISERV1.WVPVED	2021-11-03 11:42:53	Warning	Start Stop Print Edit Delete



Automated Management

- Easy install
- Smart upgrade
- Automated onboarding
- Single-click Start/Stop

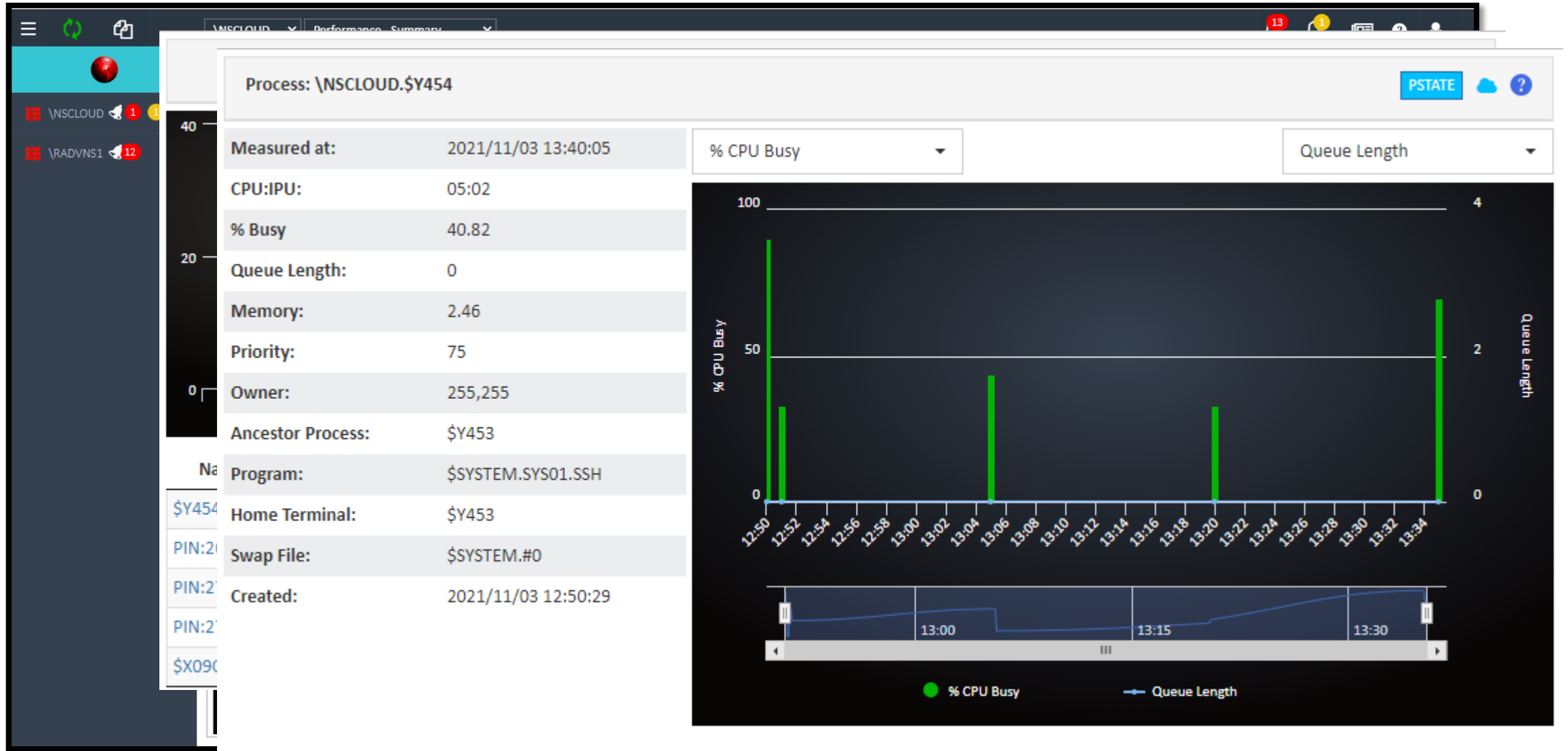


Web ViewPoint Enterprise

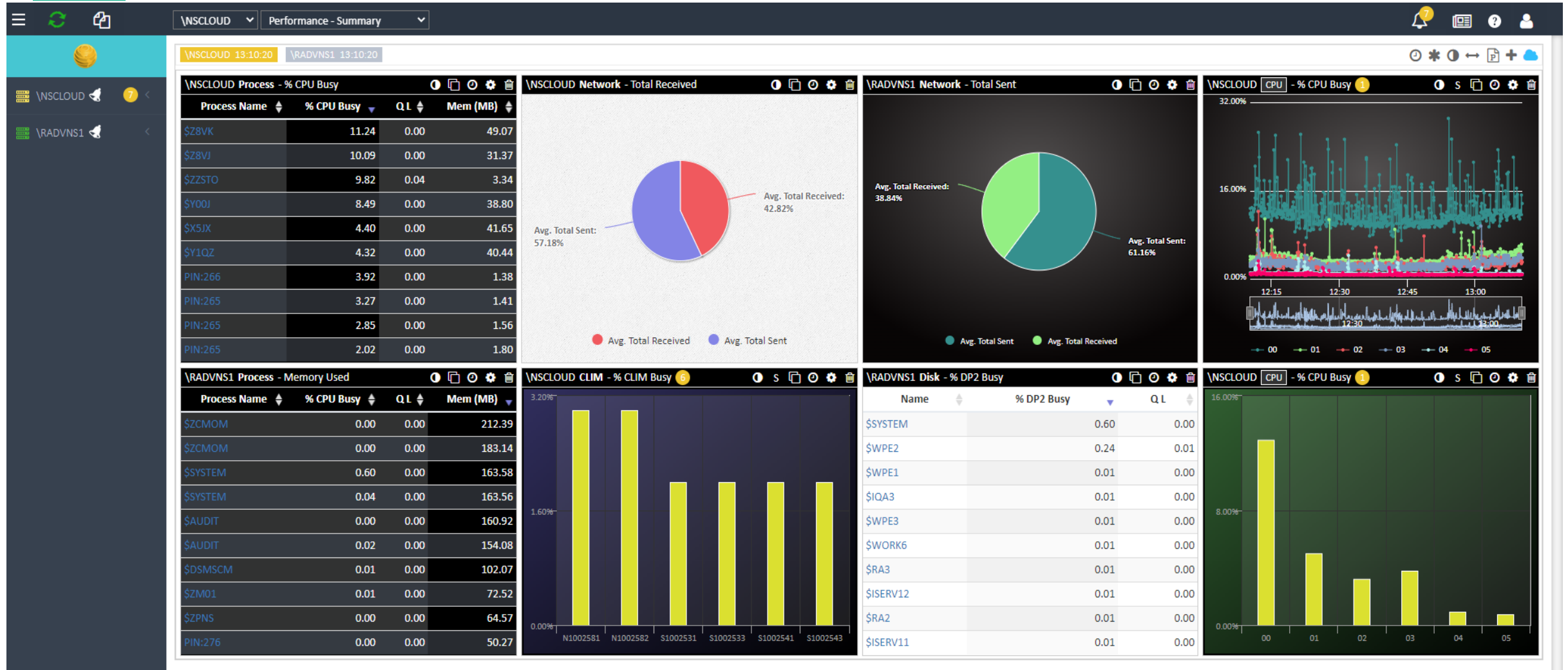
- Monitor your System and applications live, at 5-second intervals
- No Client to install. Use modern and secure browsers instead.
- Very low impact on NonStop.
- Point-and-click to define thousands of alert conditions (No scripts). WVP E does the rest.
- Automatically open tickets on Service Now; share data with Splunk, Moog, RA/LA, ...
- Designed and developed for use by hardcore Tandem pros, as well as new grads coming onboard.
- NonStop is no longer an island.



Web ViewPoint Enterprise - Live & Open



Web ViewPoint Enterprise – Dashboard Customizations



Automated Alert & Recovery

Add Alert

Settings

Forward

Name: Minor To Enterprise Manager Via

Staff Via

Pass Text:

Frequency Once Notify upon recovery

Every Minutes, until resolved

Synchronize

Major To Enterprise Manager Via

Staff Via

Pass Text:

Frequency Once Notify upon recovery

Every Minutes, until resolved

Escalate To Via After Minutes

Take Action

Obey Run TACL

Out:

Pass Text:

Event Analyzer



Smart Analytics: Storage

← Prev 10/11/2022 Next →

Current files in \$AUDIT.INSTALL of all users

Name	Type	Code	Size MB	Owner	RWEP	Modified
AA	U	0	0.0	IDEV.DEV1	AGON	2022-05-05 23:54:42
AA1	U	0	0.0	IDEV.DEV1	OOOO	2022-05-06 02:33:26
AAD	U	101	0.0	IDEV.DEV1	OOOO	2022-05-04 23:48:16
AAF	U	0	0.0	IDEV.DEV1	NUNU	2022-05-03 23:13:00
BB	U	0	0.0	IDEV.DEV2	NUNU	2022-05-03 22:27:31
FILEMGR	U	100	0.8	SUPER.SUPER	NUNU	2020-07-24 09:22:57
FILEMGRD	U	100	0.8	SUPER.SUPER	NUNU	2021-02-18 15:54:47
IPREADM	U	101	0.0	SUPER.SUPER	NUNU	2020-07-24 09:22:57
L005001		1729	953.7	SUPER.SUPER	NUNU	2020-05-12 15:43:21
L0050011		1729	953.7	SUPER.SUPER	NUNU	2020-05-12 15:44:27
L0050012		1729	953.7	SUPER.SUPER	NUNU	2020-05-12 15:45:34
L0050013		1729	953.7	SUPER.SUPER	NUNU	2020-05-12 15:46:42
L0050014	U	1729	953.7	SUPER.SUPER	NUNU	2020-05-12 15:47:52
L0050015	U	1729	953.7	SUPER.SUPER	NUNU	2020-05-12 15:49:00
L0050016	U	1729	953.7	SUPER.SUPER	NUNU	2020-05-12 15:50:09

Group Count

New Size MB

New PID	Old	Unused
0	21	3
0	27	0
0	6,717	0
0	273	85
0	169,371	389,751

	Days to 90%	Days to 100%
0.0	338,937	376,702
0.0		
0.0		
0.7	N/A	N/A

< 1 2 3 >



Monitoring Events

The screenshot displays a monitoring application interface. On the left, a table lists events with columns for 'Time' and 'Process ID'. The main area shows a detailed view of a specific event titled 'Token Dump Information'. This window includes fields for 'Time', 'Process ID', 'Subsystem ID', and 'Event #'. It also features a 'Comment' input field and an 'Acknowledge' button. Below these fields, the 'Cause/Effect/Recovery Information from EVENTX' is displayed, including an 'Action completion event for TMF *0200*'. The 'Cause' section states 'Scratch tapes have been added to, or made available within, the TMF catalog.' The 'Effect' is 'None', and the 'Recovery' is 'Informational message only; no corrective action is'. At the bottom of the window, a 'Token Dump' section lists various technical details such as 'Header_type: 1', 'Checksum: F', and 'SSID: TANDEM.TMF.G10'. The background interface shows a list of events with timestamps and process IDs, and a search bar at the top right.

Time	Process ID
2021/11/03 01:32:33	\NSCLOUD
2021/11/03 01:32:33	\NSCLOUD
2021/11/03 01:33:31	\NSCLOUD
2021/11/03 01:34:35	\NSCLOUD
2021/11/03 01:34:35	\NSCLOUD
2021/11/03 01:37:34	\NSCLOUD
2021/11/03 01:37:34	\NSCLOUD
2021/11/03 01:39:28	\NSCLOUD
2021/11/03 01:39:28	\NSCLOUD
2021/11/03 01:39:28	\NSCLOUD
2021/11/03 01:39:28	\NSCLOUD
2021/11/03 01:39:28	\NSCLOUD

Token Dump Information

Time: 2021/11/03 01:39:28
 Process ID: \NSCLOUD.\$Z06D
 Subsystem ID: TANDEM.TMF.G10
 Event #: 000201

Comment:

Acknowledge

Cause/Effect/Recovery Information from EVENTX

201

Action completion event for TMF *0200*.

Cause Scratch tapes have been added to, or made available within, the TMF catalog.

Effect None

Recovery Informational message only; no corrective action is

Token Dump

Header_type: 1
 Checksum: F
 Last_error: no_error (0)
 Last_error_tknocode: (0,0,0)
 Max_field_version: 0
 SSID: TANDEM.TMF.G10
 Used_byte_length: 172
 Buffer_byte_length: 172
 Console-Print: F
 Generating-CPU: 0

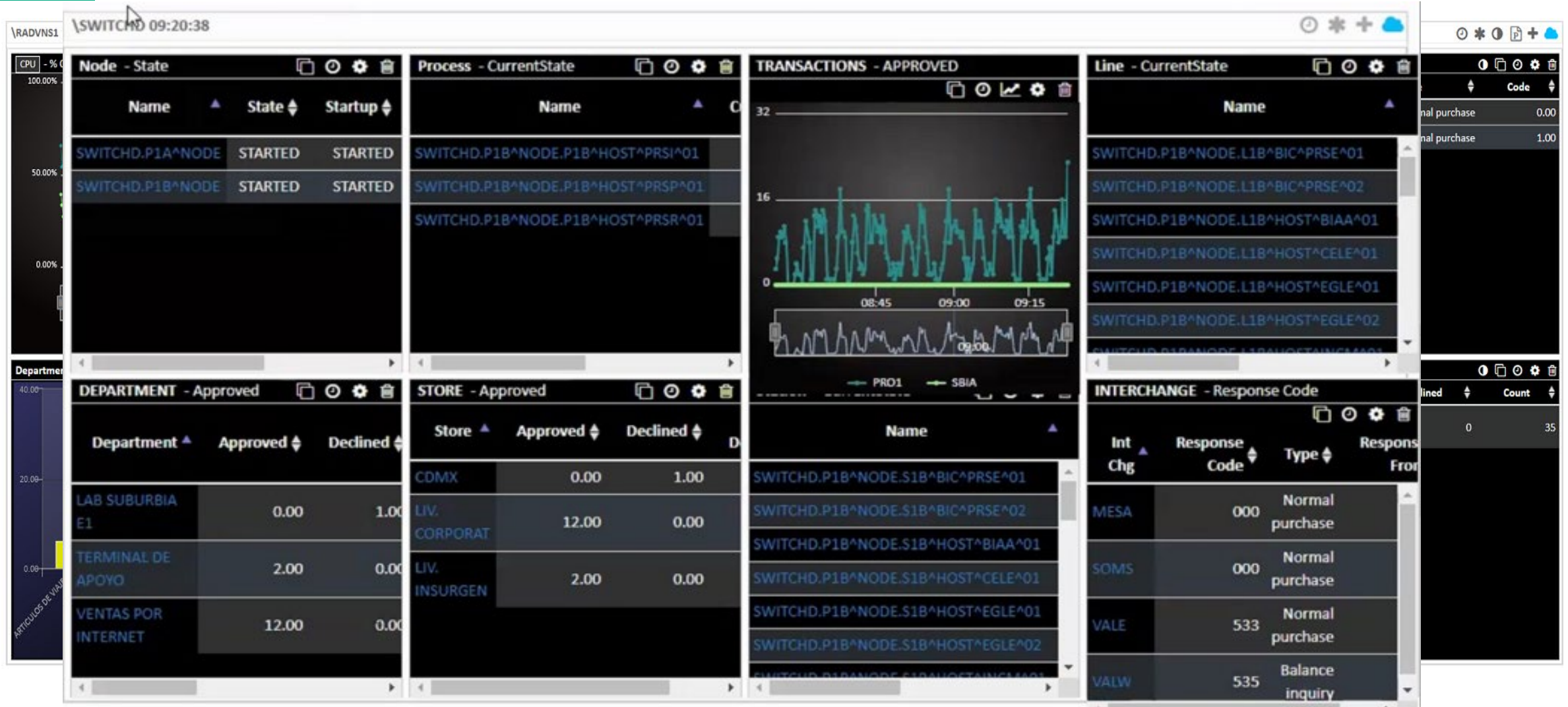
And much more...

\NSCLOUD 2
 \RADVNS1 2 2
 Events
 Operation
 Pathways
 Spooler
 Storage
 Analyses
 Admin

Job	Batch	State	Owner	Date	Copies	Pages	Report	Location
1		- READY	SUPER.SUPER	2022/07/19	1	1	SUPER SUPER	#START SPOOLER
2		- READY	SUPER.SUPER	2022/07/19	1	1	SUPER SUPER	#START SPOOLER
3		- READY	SUPER.SUPER	2022/07/19	1	1	SUPER SUPER	#START SAFEGARD
4		- READY	SUPER.SUPER	2022/07/19	1	1	SUPER SUPER	#START TMF
5		- READY	SUPER.SUPER	2022/07/19	1	6	SUPER SUPER	#START TMF
6		- READY	SUPER.SUPER	2022/07/19	1	1	SUPER SUPER	#START NULL
7		- READY	SUPER.SUPER	2022/07/19	1	1	SUPER SUPER	#START VHS
8		- READY	SUPER.SUPER	2022/07/19	1	1	SUPER SUPER	#START MEASURE
9		- READY	SUPER.SUPER	2022/07/19	1	1	SUPER SUPER	#START SPOOLER
10		- READY	SUPER.SUPER	2022/07/19	1	1	SUPER SUPER	#START EXPAND
11		- READY	SUPER.SUPER	2022/07/19	1	1	SUPER SUPER	#START VHS
12		- READY	SUPER.SUPER	2022/07/19	1	3	SUPER SUPER	#START VHS
13		- READY	SUPER.SUPER	2022/07/19	1	1	SUPER SUPER	#START MEASURE



One Pane: Base24 Monitor on WVP E Dashboard



Display your Base24 Monitor Metrics on WVP E Dashboard

New Frame Settings ? X

SERVER OBJECTS **APPS**

App Base24 Monitor ▼

Object Transactions ▼

Metric Approved ▼

Display Type

LINE BAR
PIE TABLE

Extra Metric 1 Declined ▼ X

+ ADD METRIC

Add

New Frame Settings ? X

SERVER OBJECTS **APPS**

App Base24 Monitor ▼

Object Transactions ▼

Display Type

LINE BAR
PIE TABLE




View Approval ▼

Approval
Times

Add









12:38   



← Alert Definitions



CPU

Busy %
 80-90%  > 90%



Q. Length
 4-7  > 7



IPU

Busy %
 80-90%  > 90%

Q. Length
 2-4  > 4

DISK

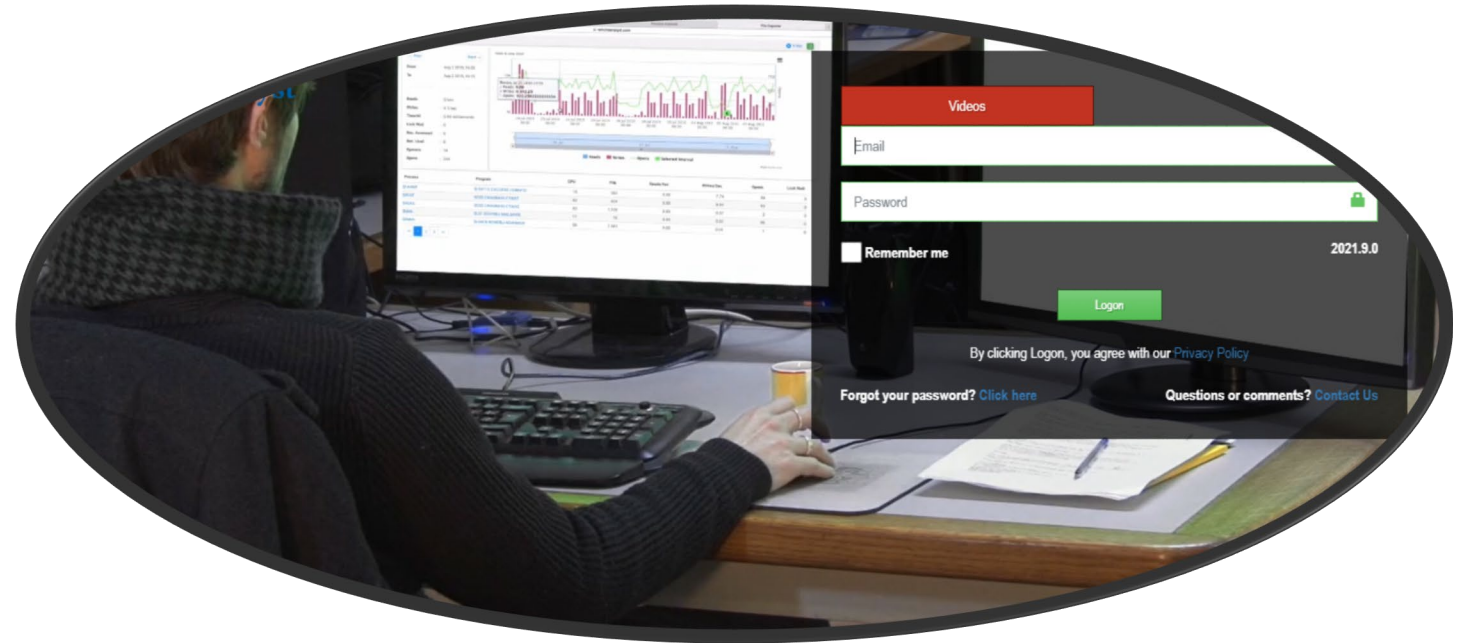
DP2 Busy %
 25-40%  > 40%

Q. Length
 7-10  > 10

PROCESS

Remote/Local Analyst

- Off platform analytics on Systems and Applications
- Detecting and reporting anomalies
- Deep Analytics
- Client-less secure interface
- Management & Technical reports
- Forecasting and recommendations



Public or Private. Your Choice.

Remote Analyst

Public Cloud on AWS

- Secure interface
- No management needed
- Very high availability
- No Software installation



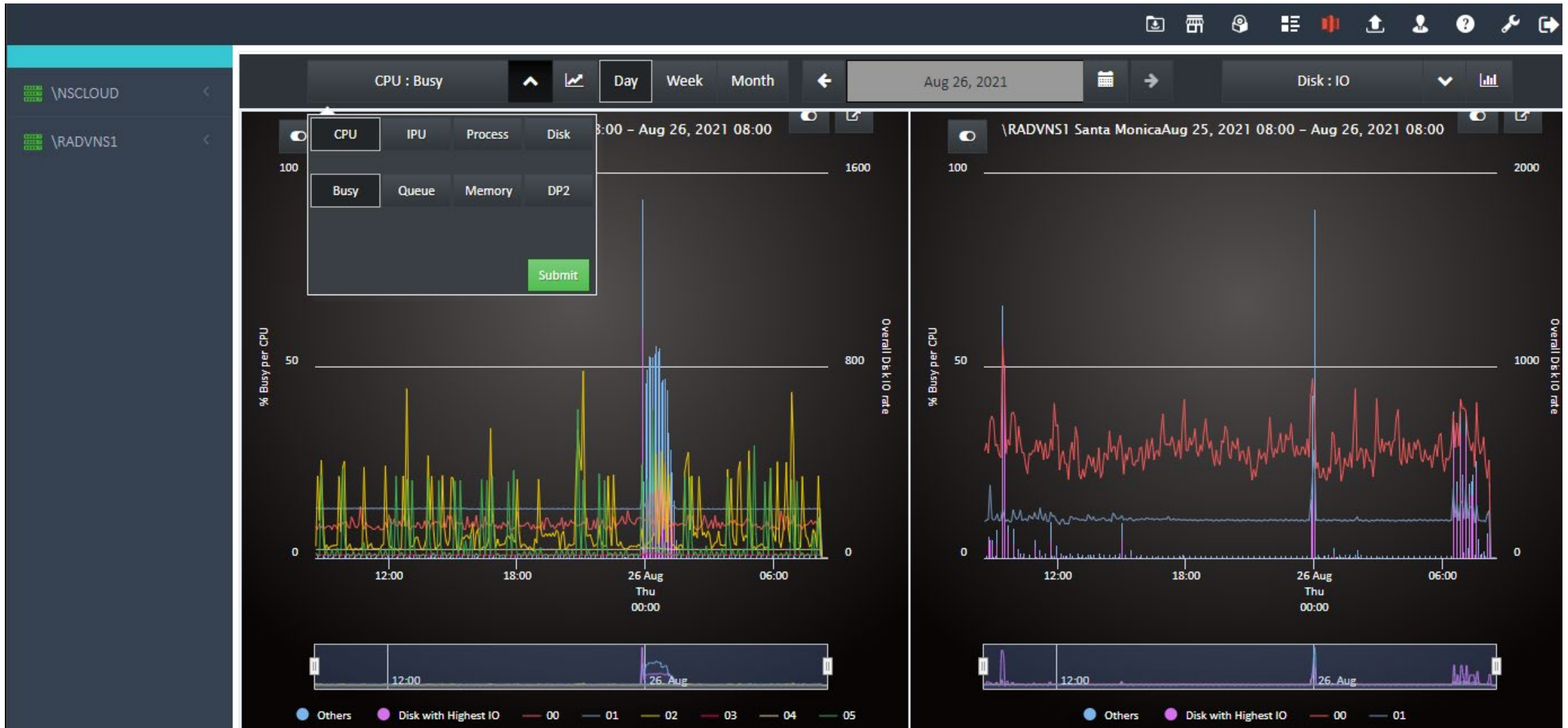
Local Analyst

Your Private Cloud

- Within your private network
- All data stays in-house
- Manage your own requirements
- Install updates as needed



Novice and Experts Alike



Know Computers? You are good to go

INSCLOUD.\$IDEL10.SA210825.FAGEOLD

For the time period

00:00 01:00 02:00 03:00 04:00 05:00 06:00 07:00 08:00

Generate these analyses

Reports (6)

Select: All | None

- Busiest Disk Files Overall Logical I/O Wait Time (R03)
- DISC-OPEN Analysis (R14)
- Disk I/O Heavy Hitters (R19)
- Disk Process Activity (R20)
- Disk SubSystem Activity (R21)
- Program Logical I/O Activity (R36)

Charts (7)

Select: All | None

- Disk File 'Requests Blocked' Shares (C13)
- Disk File Overview (Alphabetic) Table (C15)
- Disk I/Os per Second View 1 (C20)
- Disk Queue Length Distribution (C25)
- Disk Request Rate Distribution (C26)
- Physical Disk Overview (C42)
- Relative Disk Balance (C52)

And email them to

khody@idelji.com marcus.pullen@hpe.com

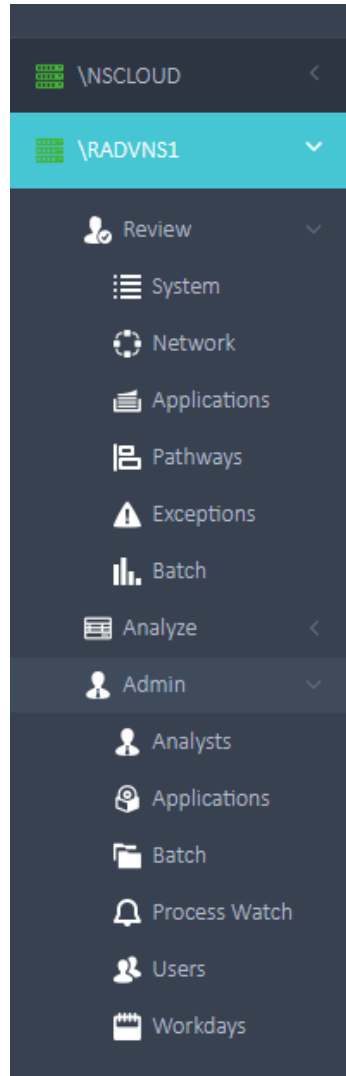
Submit

SLA

Make sure your batch job finish on time

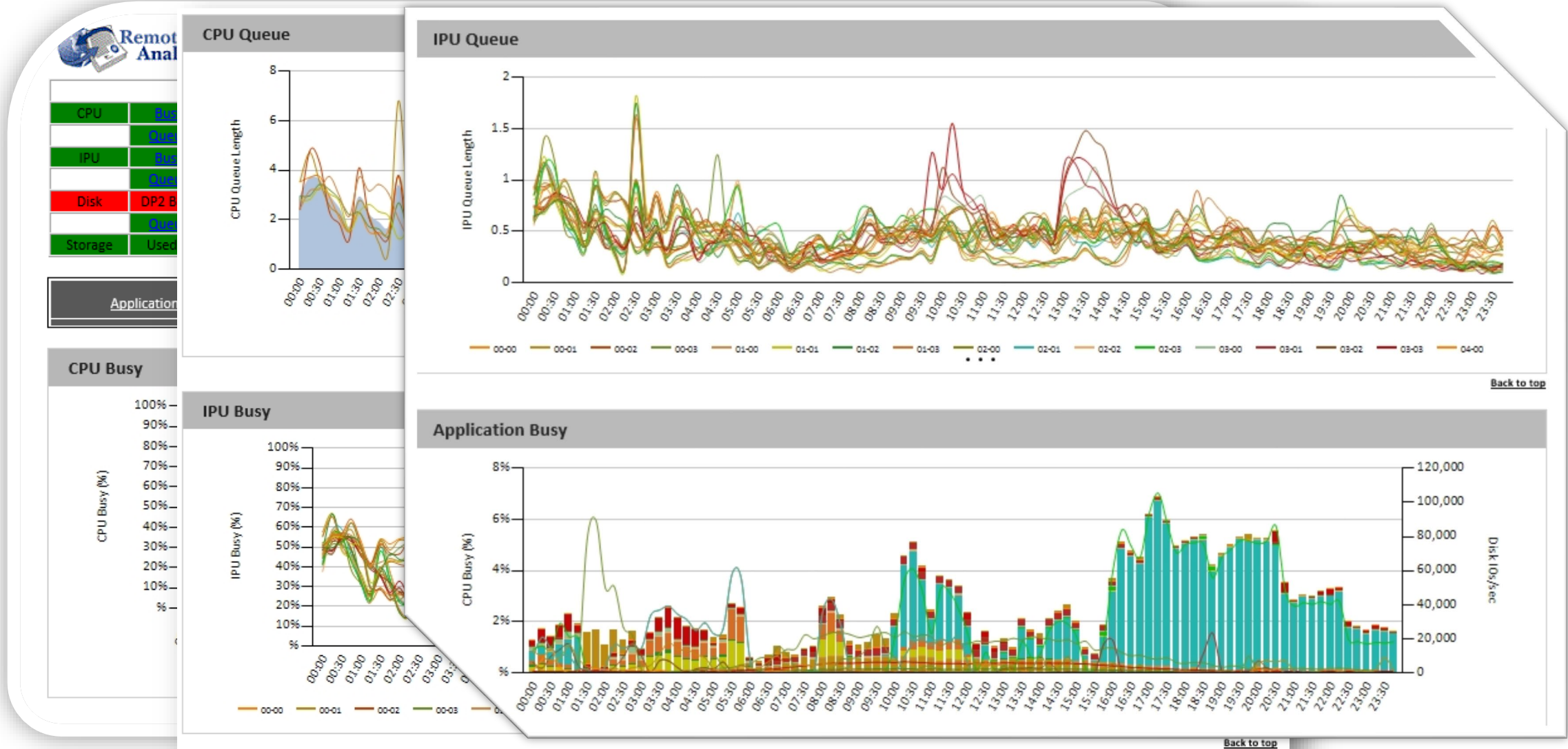


What Else?



- System. Measure Counters
- Network. TCP, IPv6, SLSA, Expand
- Applications. Any and all.
- Pathways. SERVERs
- User D.C. User Defined Counters
- Transactions Your definitions.
- Exceptions Anomalies
- Batch Meeting your SLAs
- Xapps Shadowbase, Base 24, Connex, any...

Analytics. They come to you.



Techie and Proud

File Transient

Volume	Subvol	Mem
\$IDEL17	EAAGO22	
\$SYSTEM	ZTCPI	
\$IDEL17	EAP	
\$IDEL17	EAP	
\$IDEL17	EAP	
\$IDEL17	EAP	
\$IDEL17	EAP	
\$IDEL17	EAP	
\$IDEL17	EAP	
\$IDEL17	EAP	
STEM	ZI	
7	EAP	

A	B	C
	Name	Ref.
	About	
	System Performance Summary	
	Node Overview	Q01
	Processor Overview	Q02
	System Performance Score	Q03
	Global Performance Indicators	Q04
	Node Characteristics	Q05
	CPU	
	Interval Busy Graph	Q06
	Processor Load Balance Chart	Q07
	Processor Performance Chart	Q08
	High/Low PIN Usage	Q09
	CPU Queue Lengths	Q10
	CPU Memory Utilization GB	Q11
	IPU Summary	Q12
	IPU Detail	Q13
	Low PIN Programs	Q74
	Process and Busy Distribution Analysis	
	Process Counts	Q14
	Percent CPU Busy	Q15
	Peak Processes Per Interval	Q16
	Peak Processes	Q17
	Queue Processes	Q18
	Memory Users Per Interval	Q19
	Memory Users	Q20
	Idle Programs	Q21
	Idle Processes	Q22
	Application Analyses	
	Applications - Collection	Q23
	Applications - Collection - CPUs	Q24
	Applications - Interval	Q25
	Applications - Intervals - CPUs	Q26
	Storage Analysis	
	Storage Capacity Utilization	Q27
	Processor Disk Diagram	Q28
	Processor Disk Detail	Q29
	Disk Volume Performance Analysis	Q30
	Disk Queue Length per Interval	Q31
	Cache Performance Analysis	Q33
	Disk Cache Performance Score Grading	Q34
	Disk Subprocess Analysis and Recommendations	Q35
	OSS Analysis	
	OSS Name Servers	74
	Process - OSS VC	75
	OSS CPU	76
	OSS Infrastructure	77
	OSS Infrastructure Details	78
	Alerts	
	Disk Process Olength Alerts	79
	File Transient Open Alerts	80
	File Requests Blocked Alerts	81
	Details	
	System Class Details	82
	Subsystem Class Details	83
	Pathway Class Details	84
	Server Class Details	85
	Transient Class Details	86
	Transient Process Distribution	87
	Transient Ancestors	88
	Other Details	
	Negative Factors	
	Contributing Factors to CPU Score	90
	Contributing Factors to Memory S	91
	Contributing Factors to Disk Score	Q54
	Communications	
	Servernet/Endpoint Analysis	Q55
	IPC Traffic Analysis	Q56
	Expected Performance After Changes	
	Processor Load Balance - After Primary Changes	Q57
	Processor Performance - After Primary Changes	Q58
	Disk Volume Performance - After Primary Changes	Q59
	Processor Disk Diagram - After Primary Changes	Q60

----- CPU 01 IPU: 4 -----

	IPU 01	IPU 02	IPU
Process Move Recommendations			Q61
Expected System Performance After Tuning			
Processor Load Balance - After Tuning			Q62
Processor Performance - After Tuning			Q63
System Recovery Performance Score Grading			Q64
CPU Failure Simulation			Q65
Server Process Analysis			Q66
Dynamic Server Analysis			Q67
Disk Cache Change Analysis			Q68
CPU Cache Change Analysis			Q69
Tuner Analysis Statements			Q70
SCF Commands & Parameters			
SCFIN			Q71
SCFBAK			Q72
Exclude Parameter Values			Q73

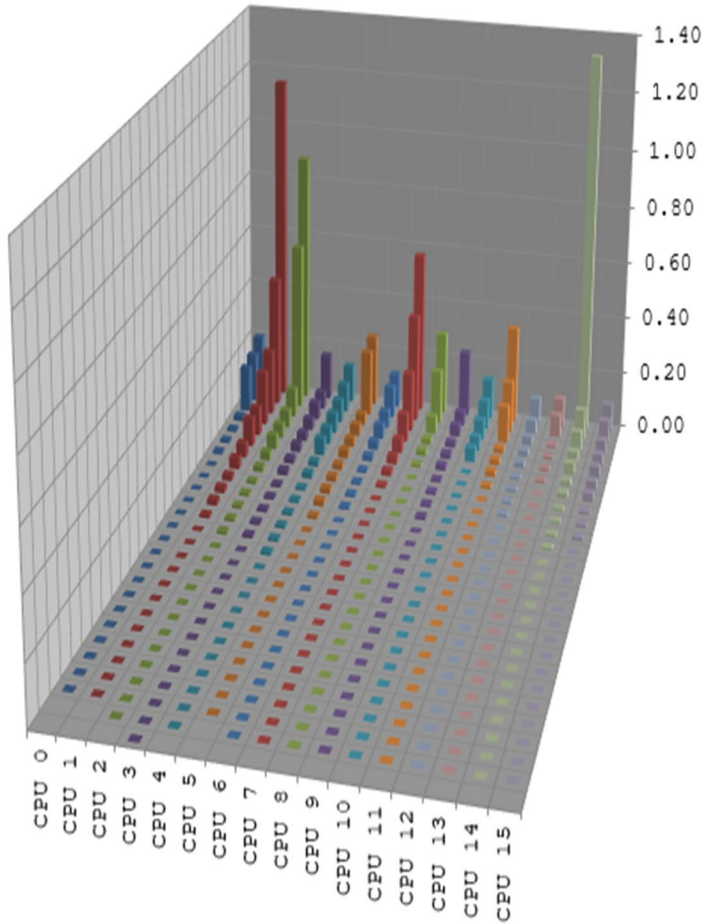
	383.23	0.01		
	383.86	0.01		
h80/bin/jav	69.37	0.01		
h80/bin/jav	69.92	0.01		
h80/bin/jav	70.03	0.0		

0 00
70 00
50 00

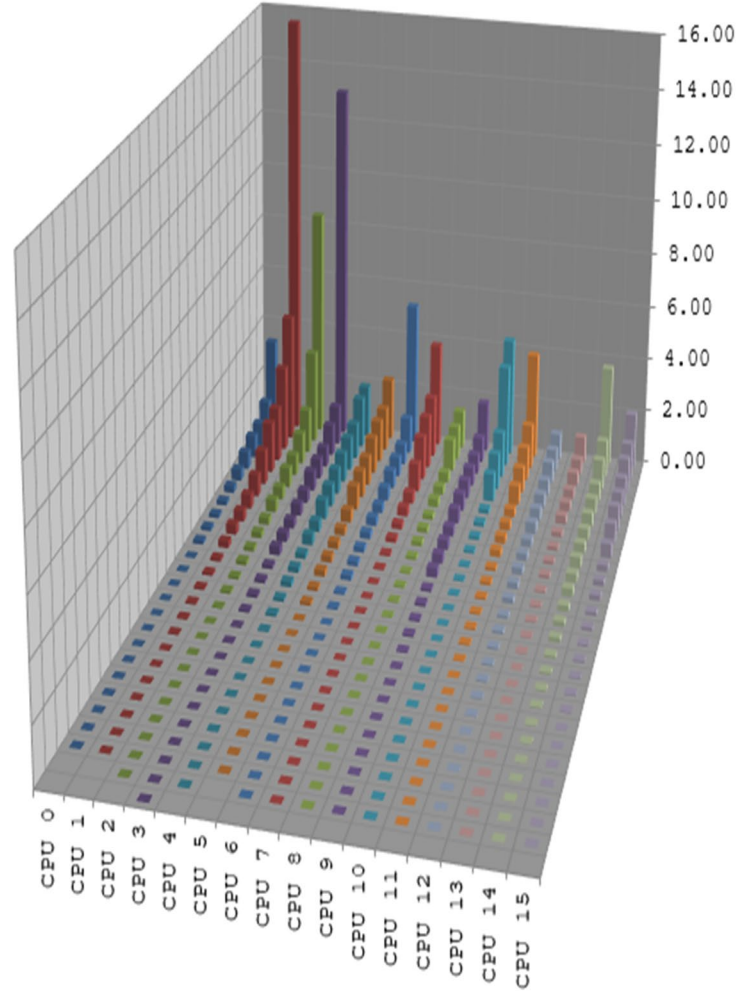
0 00
0 50

Let's dig in

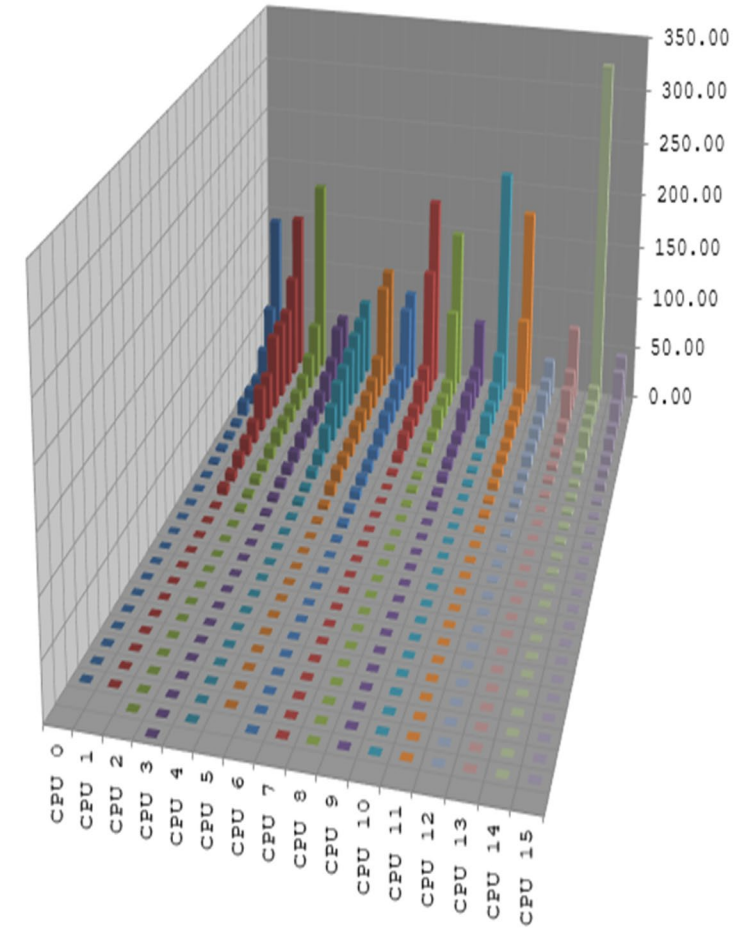
Disk Queue Length Distribution



Disk Process CPU Utilization Distribution



Disk I/O Rate Distribution



Dynamic Data Driven

- Effortlessly integrate new data
- No ceiling; grow as needed
- Create and distribute as many reports as needed
- Data is kept for years
- Remote / Local Analyst knows your system better than you do!

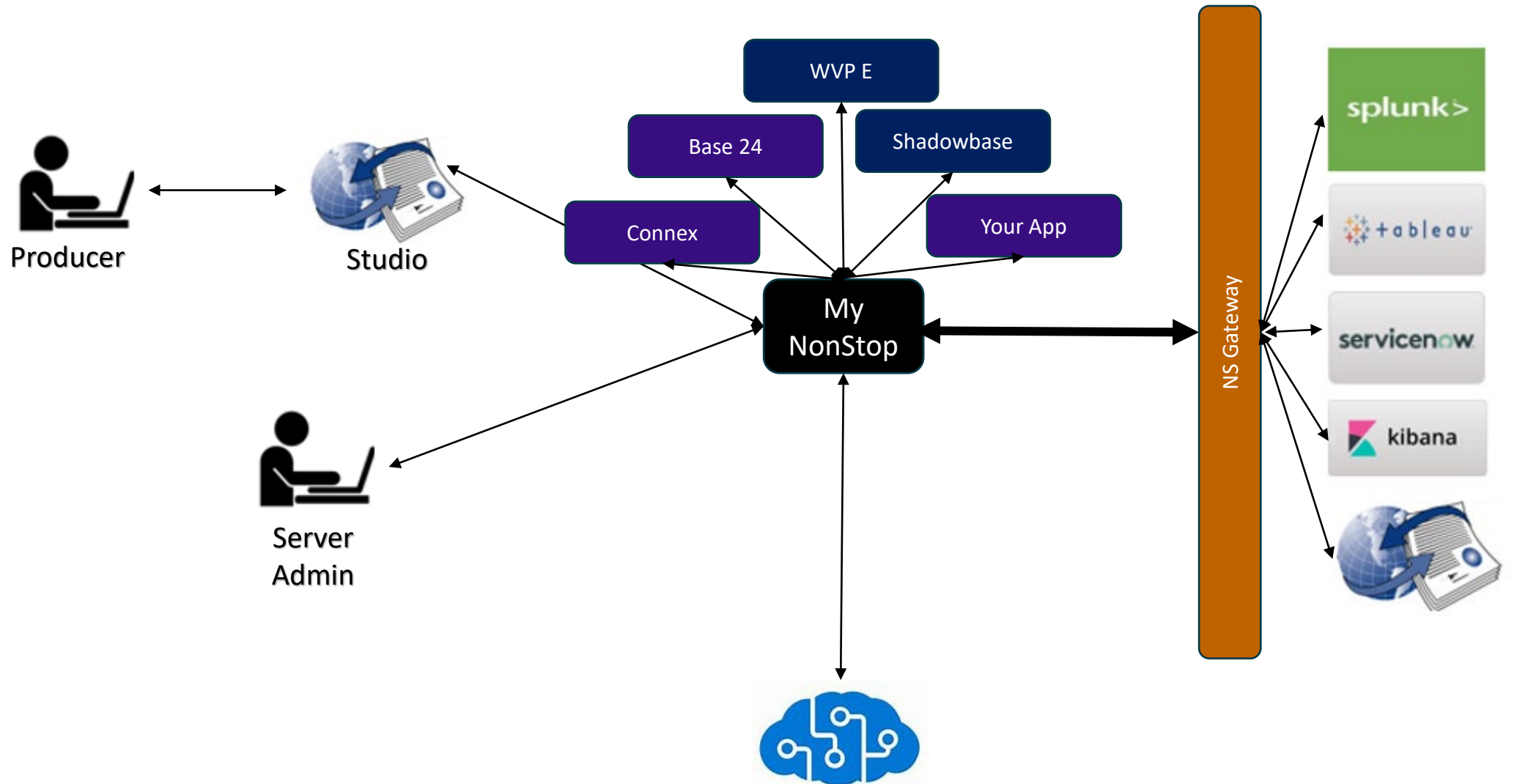


In Short

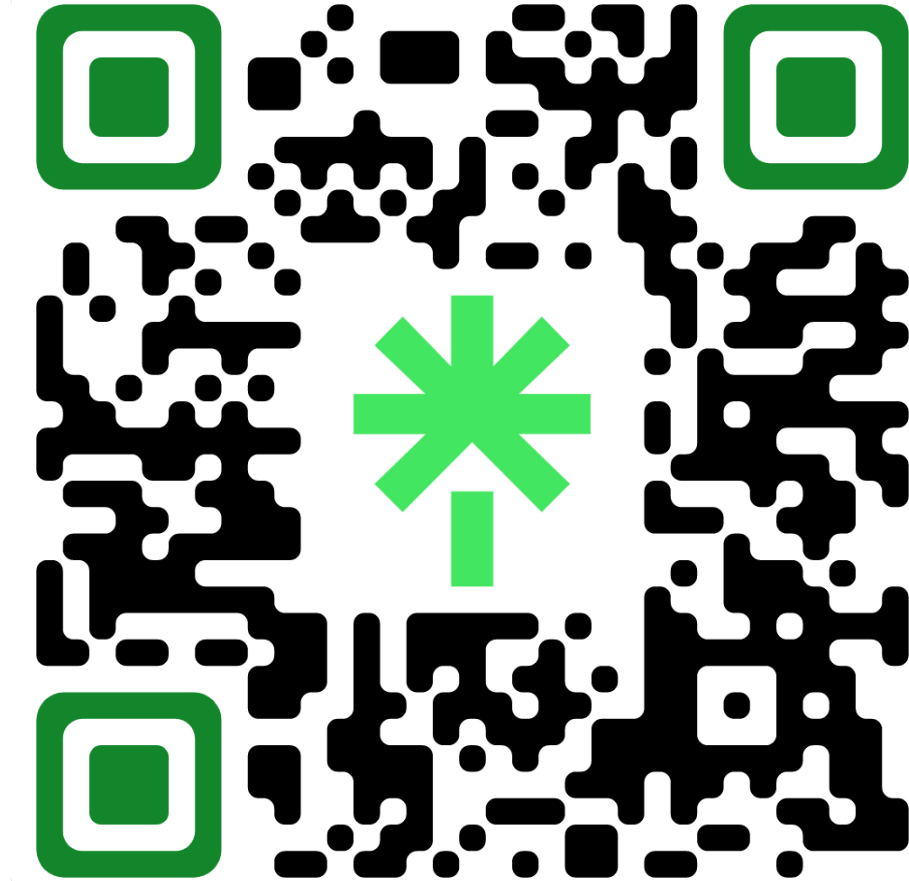
- Be proactive
- Live is only part of the story
- Do your analytics away from your main business
- Right information to the right people
- Post Release analyses
- Prepare for the new generation



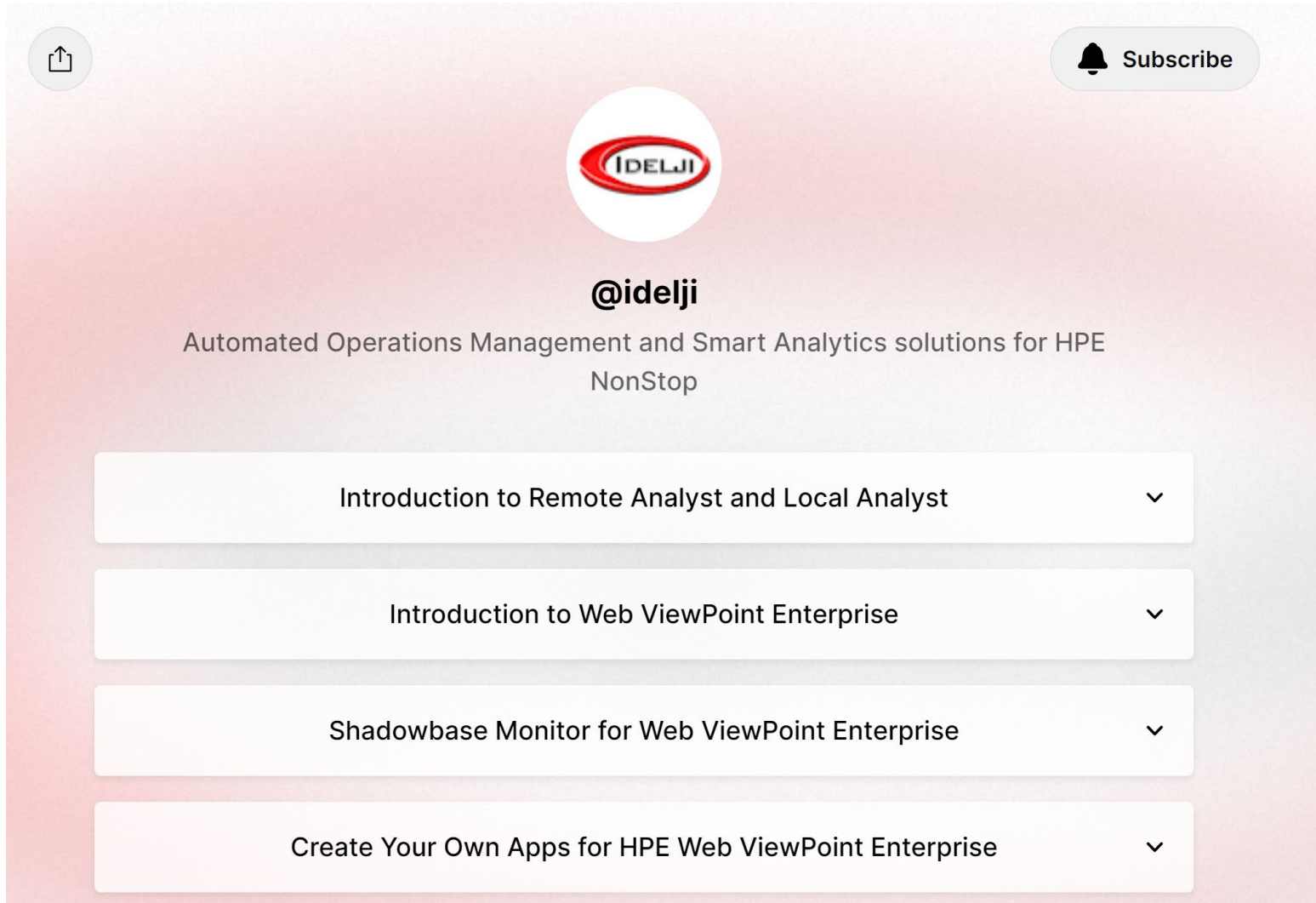
Platform: Open, Extensible, Connected






Experience the Future



Experience the Future





@idelji

Automated Operations Management and Smart Analytics solutions for HPE
NonStop

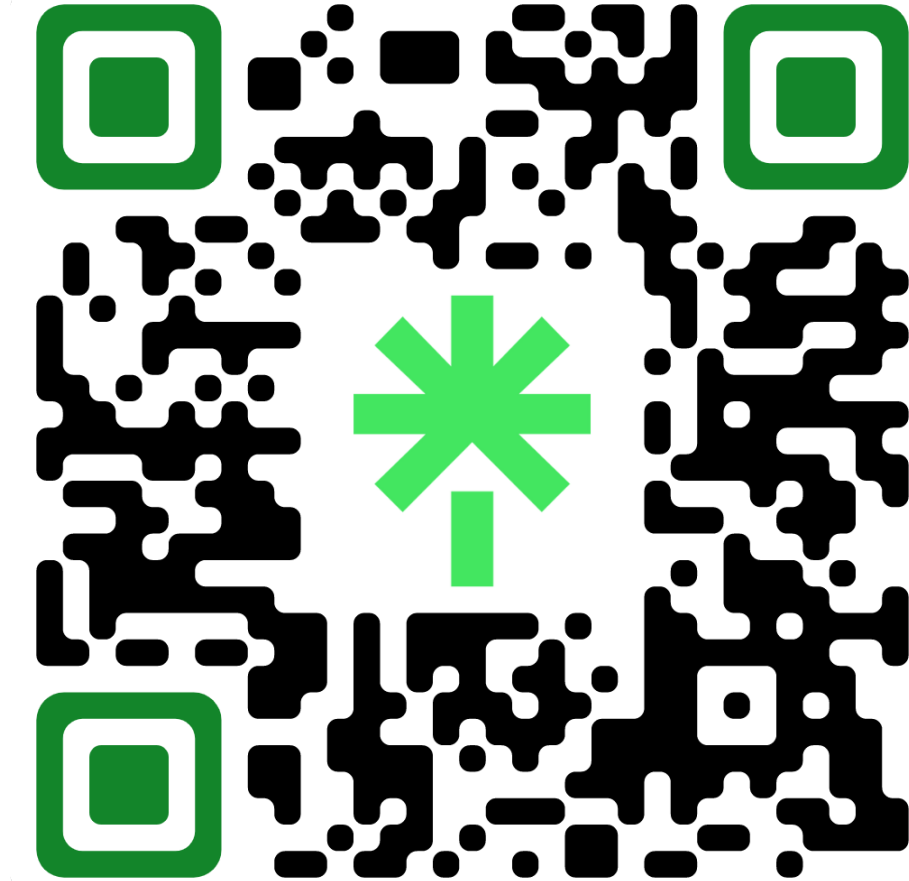
- Introduction to Remote Analyst and Local Analyst
- Introduction to Web ViewPoint Enterprise
- Shadowbase Monitor for Web ViewPoint Enterprise
- Create Your Own Apps for HPE Web ViewPoint Enterprise



Experience the Future

The screenshot displays a user interface for a video library. At the top, there is a header bar with a share icon on the left, the Idelji logo in the center, and a notification bell icon on the right. Below the header, two video titles are listed in a scrollable container: "Introduction to Web ViewPoint Enterprise" and "Shadowbase Monitor for Web ViewPoint Enterprise", each with a downward arrow indicating it is expandable. The main content area features a video player. The video frame shows a woman with long brown hair wearing a light blue button-down shirt. To her right, the Idelji logo is visible. Below the logo, the text reads "Create Your Own Apps for HPE Web ViewPoint Enterprise". In the top right corner of the video frame, there are three icons: a heart for likes, a clock for watch history, and a share icon. The video player's control bar at the bottom includes a play button, a progress bar showing 00:04, a volume icon, a closed captions icon, a settings gear, a full screen icon, and the Vimeo logo. A close button (an 'x' in a circle) is located at the bottom center of the player area.

Experience the Future



Thank you

vedantshrivastava@idelji.com

