

Hewlett Packard
Enterprise

TBC23 – VT4

HPE Shadowbase – Maximize NonStop Digital Resilience with Data Replication, Integration, and Validation

Paden R. Holenstein

Shadowbase Business Development Specialist

Gravic, Inc.

Follow us on

LinkedIn



Disclaimer

This presentation contains forward-looking statements regarding future operations, product development, product capabilities and availability dates. This information is subject to substantial uncertainties and is subject to change at any time without prior notification. Statements contained in this presentation concerning these matters only reflect Gravic, Inc.'s predictions and/or expectations as of the date of this presentation and actual results and future plans of Gravic, Inc. may differ significantly as a result of, among other things, changes in product strategy resulting from technological, internal corporate, market and other changes. This is not a commitment to deliver any material, code or functionality and should not be relied upon in making purchasing decisions.

Specifications are subject to change without notice and delivery dates/timeframes are not guaranteed...purchasing decisions should not be made based on this material without verifying the desired features are available on the platforms and environments desired.

NOTICE: This product does not guarantee that you will not lose any data; all user warranties are provided solely in accordance with the terms of the product License Agreement. Each user's experiences will vary depending on its system configuration, hardware and other software compatibility, operator capability, data integrity, user procedures, backups and verification, network integrity, third party products and services, modifications and updates to this product and others, as well as other factors. Please consult with your supplier and review our License Agreement for more information.

All trademarks mentioned in this presentation are the property of their respective owners.

HPE Connect TBC slides are used with express permission from HPE product group.

Agenda

- Key technology trends & challenges
- HPE Shadowbase solutions
- New & future features
- Summary



Key technology trends & challenges



Key technology trends

- **Digital resilience**

- Protection, detection, containment, recovery and repair capabilities against information and communication technology (ICT) related incidents
- Government regulations underway

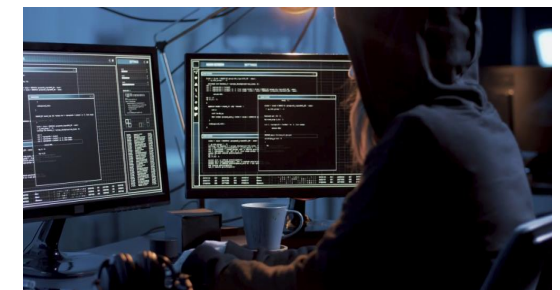
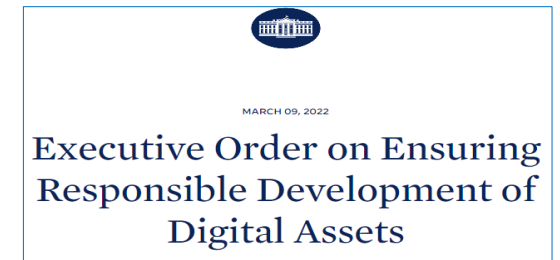
- **Ransomware protection — let us help you get here**

- Global business concern
- New approaches (e.g., “immutable” backups and “air-gapped” systems)
- **Value of TMF-audited applications and transaction protection**

- “I don't expect that there will be any customers left with us when this is over.”

- CloudNordic Exec

Source: [PCMag.com/News/Ransomware-Wipes-Out-Data-Access-for-Majority-of-Cloud-Providers-Customers](https://www.pcmag.com/news/ransomware-wipes-out-data-access-for-majority-of-cloud-providers-customers)



Key technology trends

- **HPE GreenLake**

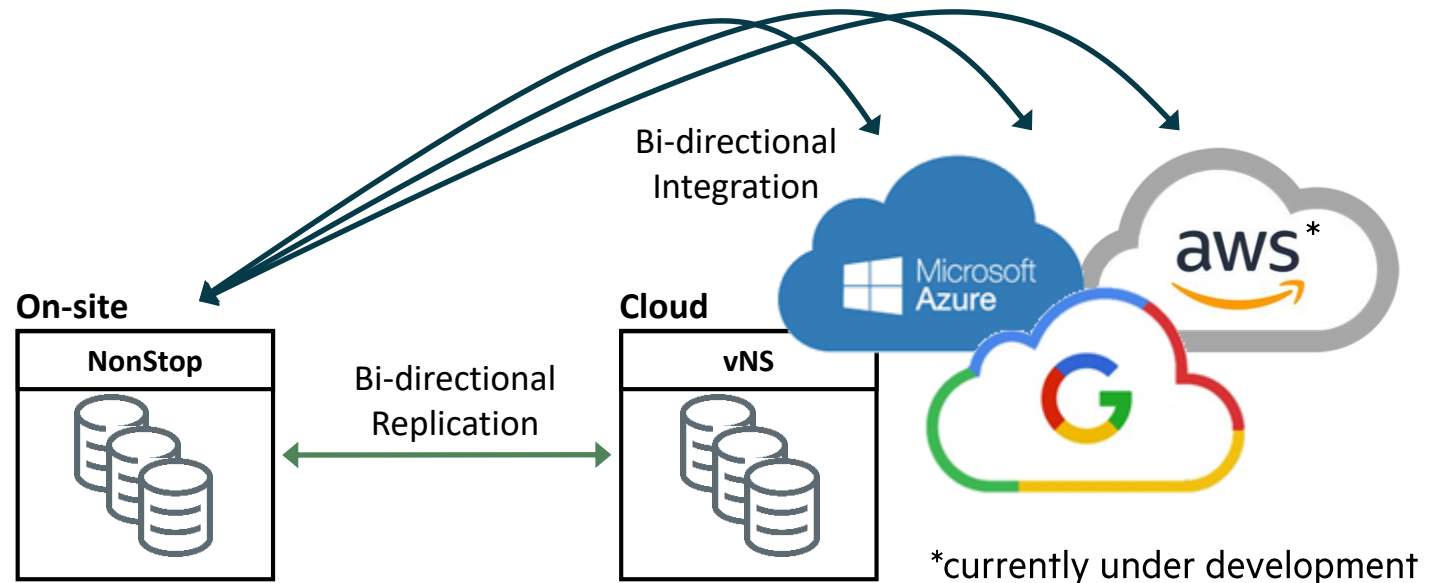
- HPE Shadowbase fully supports HPE GreenLake deployments

- **Virtualization**

- HPE Shadowbase fully supports HPE NonStop virtual environments including Google Cloud Platform, Azure Skytap, and Private Cloud instances

- **Cloud integration & data analytics**

- HPE Shadowbase provides high-volume, performant data streaming for HPE NonStop cloud integration and online analytical processing (OLAP)



Common IT challenges that customers ask our help with

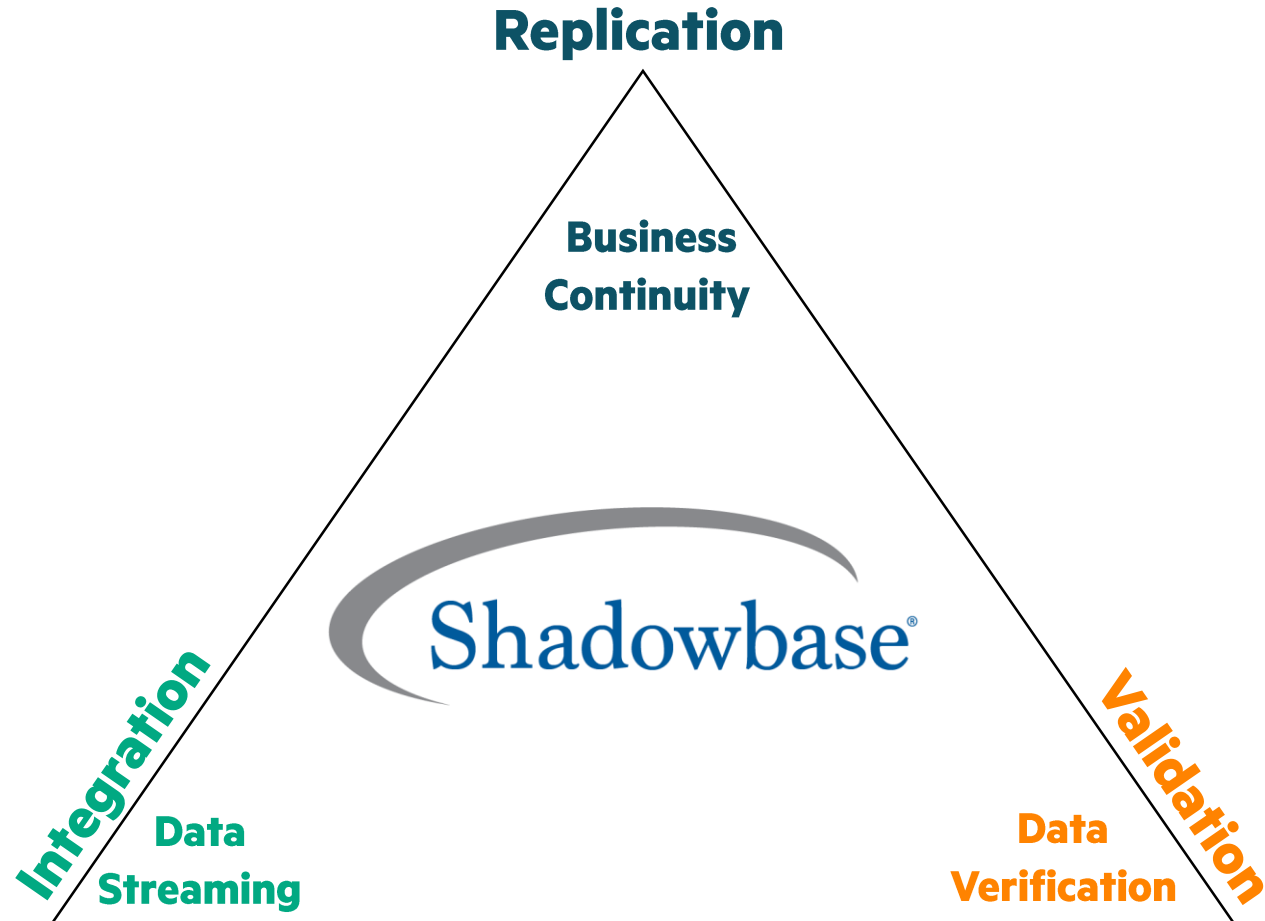
- **Ensuring continuous application availability**
 - Avoiding costly downtime
 - Recovering rapidly after disasters
- **Migrating online applications**
 - Eliminating migration risk
 - Adopting new IT infrastructure and migrating datacenters
 - Upgrading HPE NonStops via *platform refreshes*
- **Validating data accuracy**
 - Proving data consistency across the enterprise
 - Meeting regulatory and audit compliance
 - Knowing your transactions
- **Eliminating data & application silos**
 - Streaming data across the enterprise
 - Maximizing data and its value
 - Enabling real-time business intelligence
- **Modernizing**
 - Transforming Enscribe files into SQL databases
 - Upgrading from Attunity, GoldenGate, RDF, and other “mature” solutions



HPE Shadowbase solutions



HPE Shadowbase Data Resilience



HPE Shadowbase

Business Continuity solutions



Digital Resilience

- Extreme application availability: achieving century uptimes
- Extreme data resilience with zero data loss and rapid recovery

Use Case

ZDM

Zero Downtime Migration for California Credit Union

ShadowbaseSoftware.com/Publications/Use-Cases/ZDM-for-Credit-Union/



Capabilities

- Eliminate unplanned downtime
 - **Active / Passive** Disaster Recovery (DR)
 - **Active / Almost-active** “Sizzling-Hot-Takeover” (SZT)
 - **Active / Active** Continuous Availability (Hot-Hot)
- Eliminate planned downtime
 - Use Zero Downtime Migration (ZDM) for upgrades, migrations, and platform refreshes
 - Provide **continuous application availability** and **eliminate business risk** while the migration occurs
- Eliminate data loss
 - **Shadowbase Zero Data Loss** (ZDL, EAP)
 - Synchronous replication technology

HPE Shadowbase

Data Validation: Compare & Repair



Source & target data validation

- Find and resolve data discrepancies
- Helps meet regulatory requirements
- Proves data consistency to key stakeholders

Use Case



Massive Datacenter Migration for Money Transfer Firm

ShadowbaseSoftware.com/Publications/Use-Cases/Massive-Datacenter-Migration-for-Money-Transfer-Firm/



Capabilities

- A Business Continuity “must have”
- Runs online and on-platform
- Supports Enscribe, SQL/MP, and SQL/MX
- Repair function
- Works with all data replication engines

Key benefits

- Ensures backup is ready for an immediate takeover
- Verifies data for migrations, platform refreshes, etc.
- Creates timeline of data points when the DBs matched

Continuous availability for merchant services

HPE Shadowbase for Business Continuity – Active / Active “Partitioned”

Daniel Eklund
Senior Consultant

Situation

- Large payment processor
- HPE NonStop systems

Problem

- 24x7 application usage
- Continuous application availability
- Fault tolerance
- Rapid recovery



Continuous availability for merchant services

HPE Shadowbase for Business Continuity – Active / Active “Partitioned”

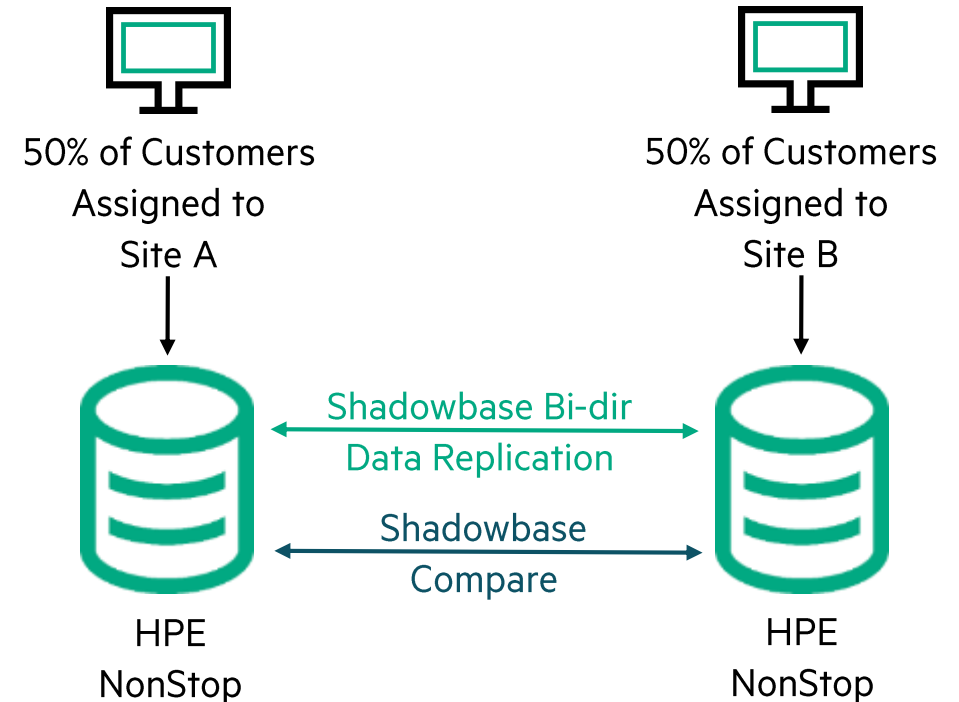
Daniel Eklund
Senior Consultant

Solution

- Shadowbase Active/Almost-Active for automatic failover and recovery
- Shadowbase Compare for Data Validation

Outcomes

- Geographic fault tolerance
- Continuous application availability
- Avoids data collision avoidance in this partitioned architecture
- Online data consistency checking and repair discrepancies between sites



HPE Shadowbase

Data & Application Integration solutions



Data Streaming

- Eliminate data and application silos
- Integrate data from one database into a different database or application for competitive advantage

Use Case

AI BC DI

Real-Time Fraud Detection and Resolution for Financial Switch

ShadowbaseSoftware.com/Publications/Use-Cases/Fraud-Detection-for-Financial-Switch/



Capabilities

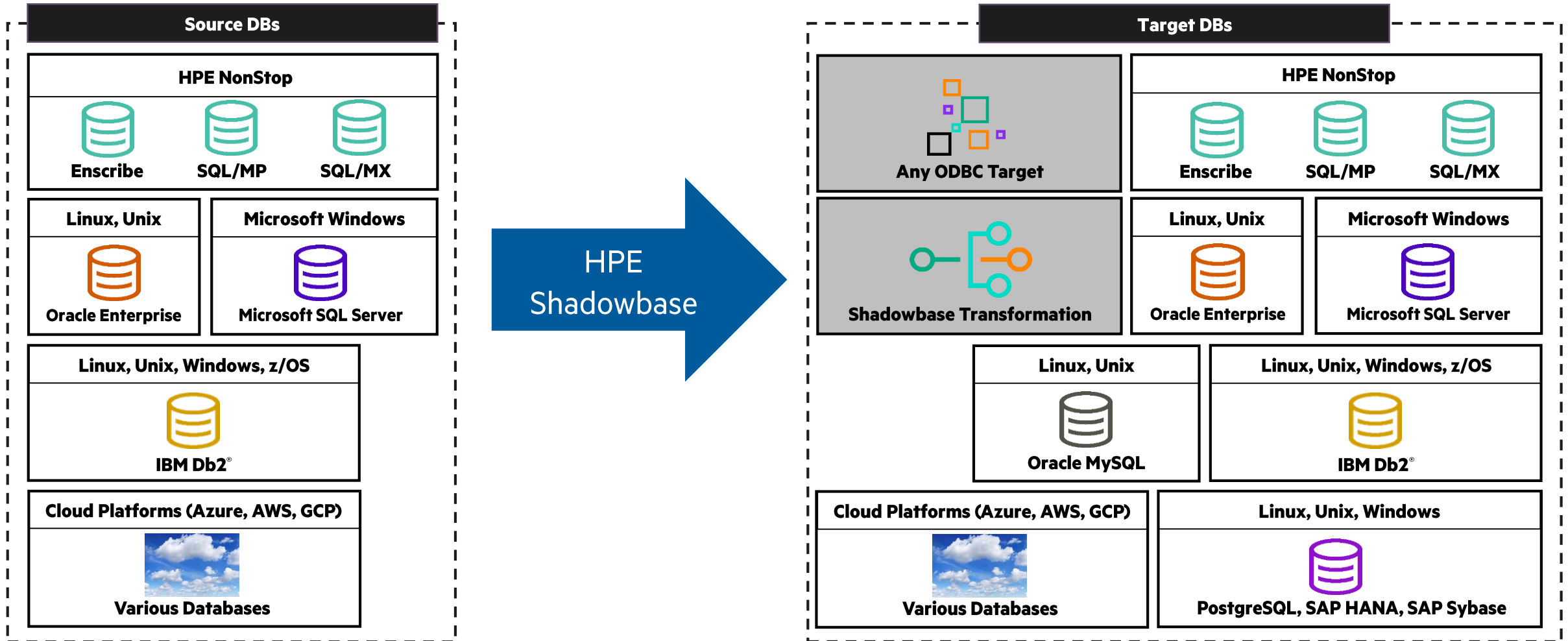
- Like-to-like and dissimilar environments
- Unlimited data transformation, scrubbing, filtering, cleansing, and scalability
- Extend replication capabilities with embedded application logic

Popular uses

- Analytical processing
- Cloud integration
- Data streaming and change data capture
- Data warehouse feeds
- Fraud detection
- Real-time business intelligence

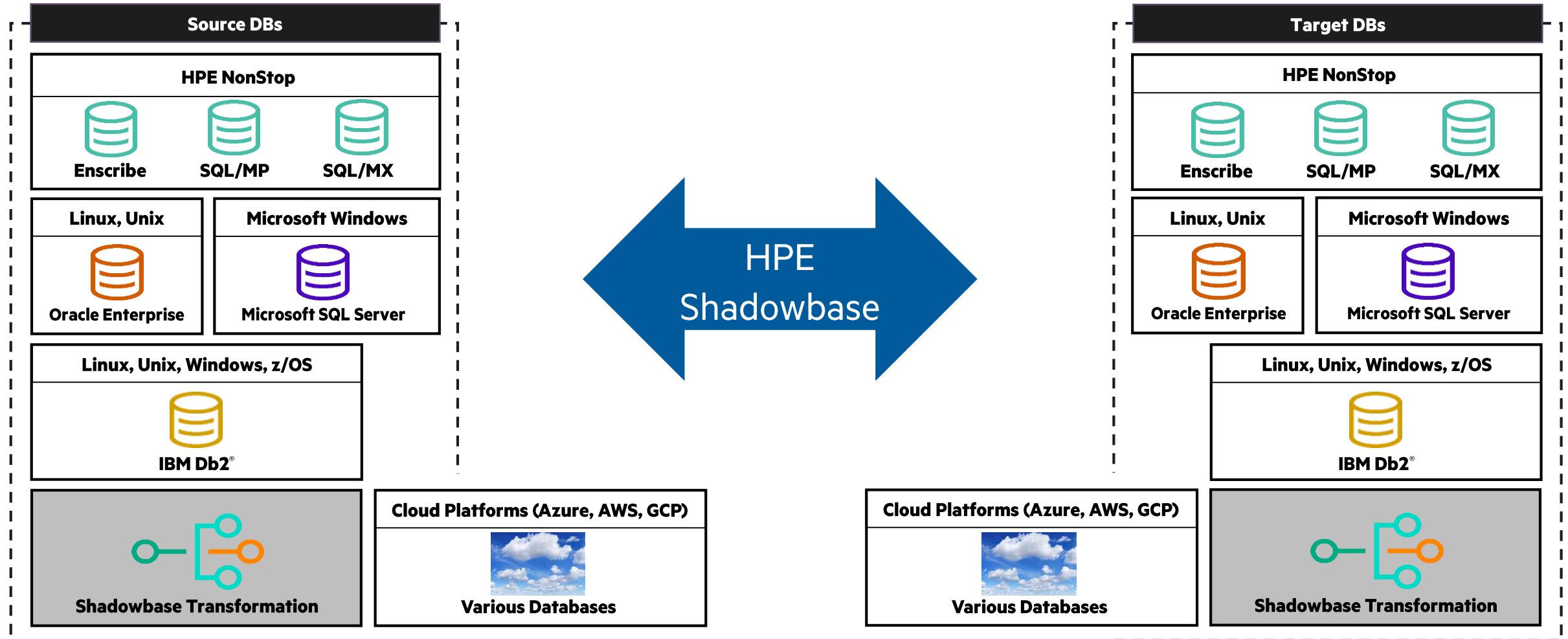
Homogeneous & heterogeneous uni-directional data replication and streaming

All combinations supported



Homogeneous & heterogeneous bi-directional data replication and streaming

All combinations supported

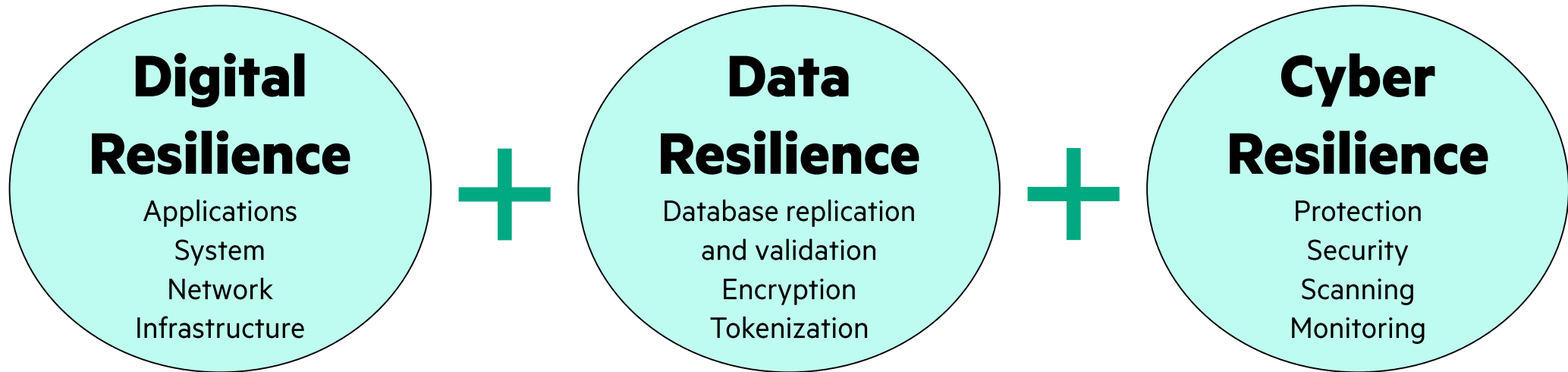


HPE Shadowbase Ransomware & Malware defense



Malware & Ransomware protection requires multiple layers of resilience

Business Continuity with Digital Resilience



Digital resilience for Ransomware defense using HPE Shadowbase

On HPE NonStop

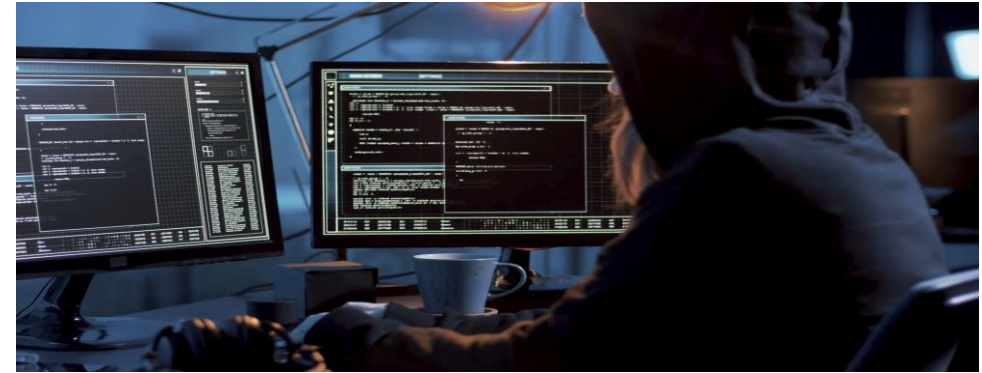
- *TMF is your first line of defense!*
- Non-audited data and data replication *does not* have the same advantages, capabilities, or protection
 - In a non-audited environment, how would you know?

Using TMF

- ACID transactions
- Guarantees database changes are **always** logged
- Enables the **Audit Trail** to be used for recovery

HPE Shadowbase provides unique capabilities

- Integrates with TMF to extract database change data
- Detects man-in-the-middle (MiTM) attacks between key processes since messages are fingerprinted
- Fingerprints Shadowbase Queue Files to detect file tampering
- Gravic has provided digital resilience solutions for 40+ years



Only the Truth: Debunking TMF NonStop Data Protection Myths



New Improvements and Authors' Note

We recently transformed this content from an article into a full-blown video. We feel it is critically important to address this topic because we continue to see considerable misinformation still exists regarding the use of TMF and data protection in general on HPE NonStop systems.

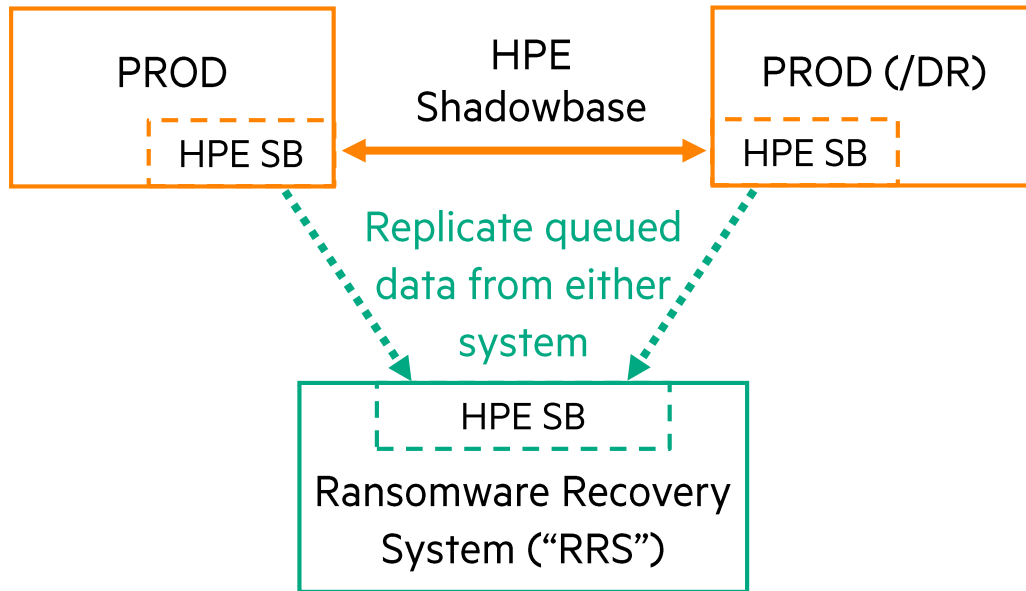


ShadowbaseSoftware.com/Publications/TMF-Myths/

HPE Shadowbase Digital Resilience

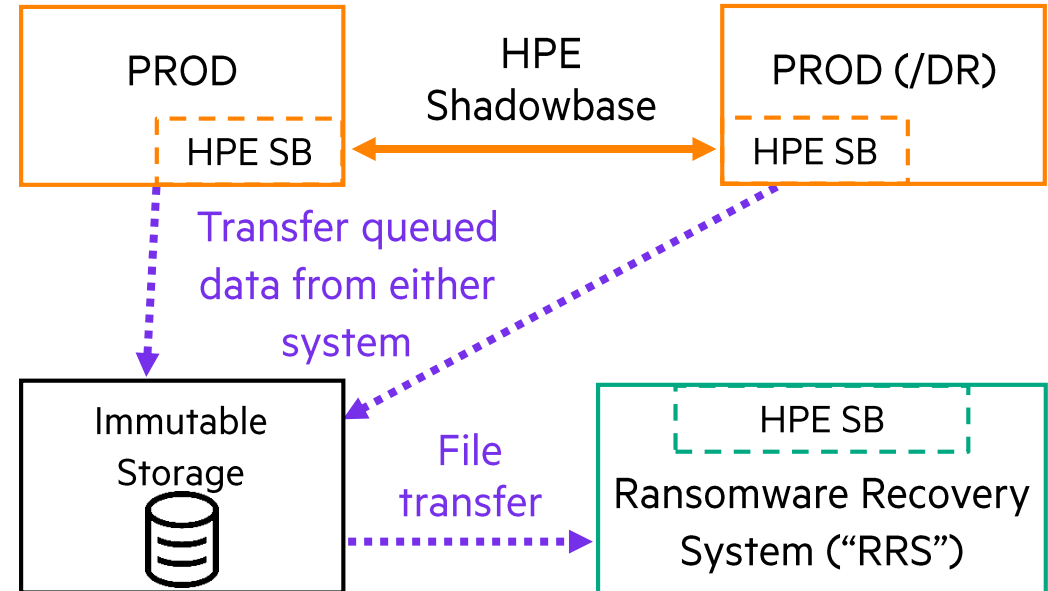
Ransomware & Malware Defense

Solution 1: Real-time recovery system



- TCP/IP or Expand feed from either system to RRS
- Capture and store (queue) DB change data **directly on RRS**
- But is this really S-A-F-E?

Solution 2: Air-gapped, immutable storage



- Air and people gapped RRS
- Capture and store (queue) DB change data **on immutable storage**

Survive a Ransomware Attack!

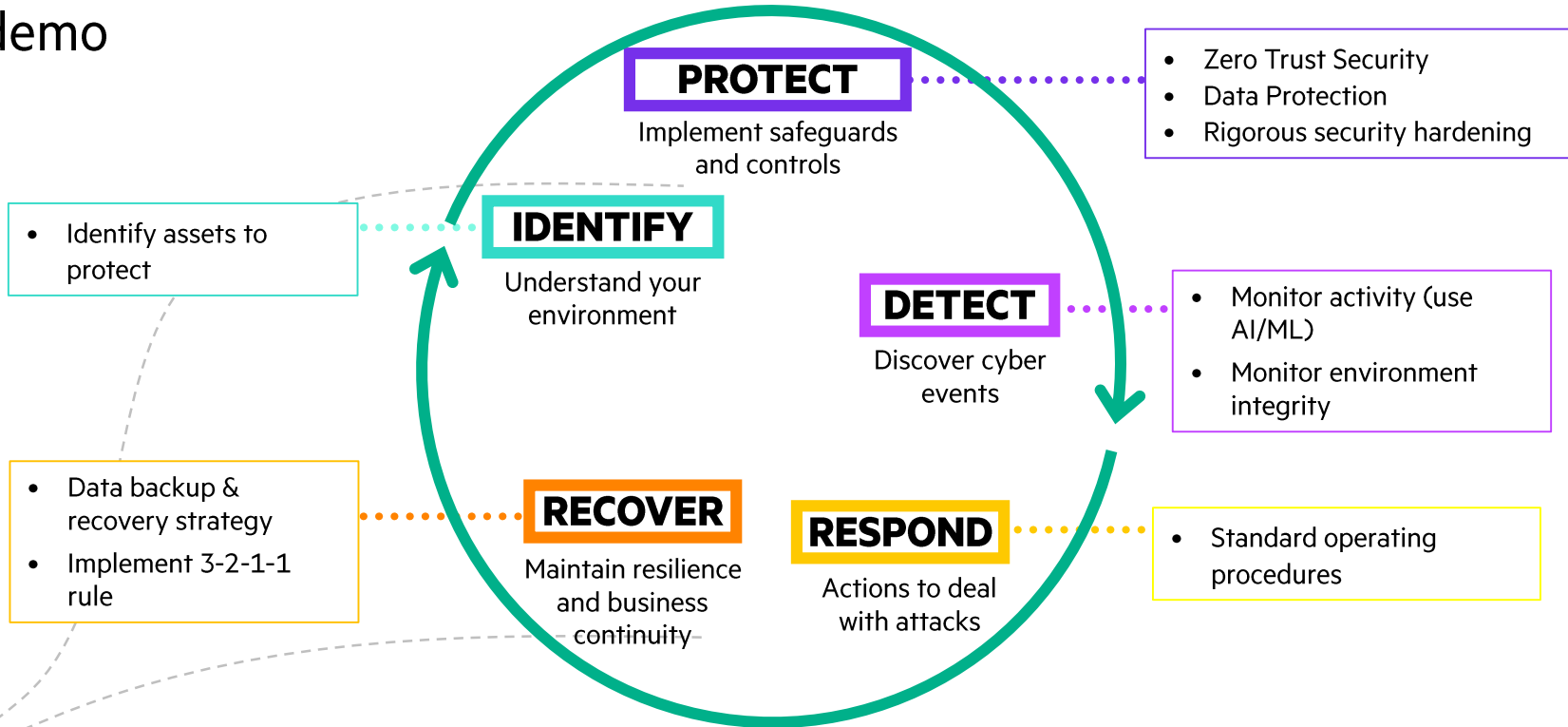
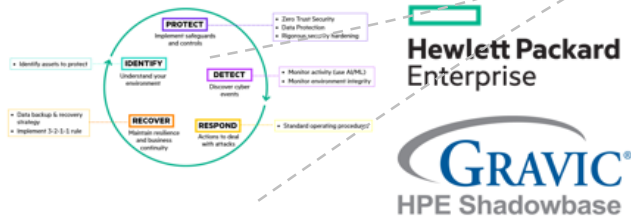
HPE Shadowbase Ransomware demo

Survive a Ransomware Attack!

HPE solutions can help protect and recover your mission critical NonStop systems and data from malware and Ransomware

- Rapidly restore systems and recover data
- Air-gapped backups
- Immutable storage
- 3-2-1-1 backup rule
- Preserve corrupted environment for forensics

Demo at HPE booth



HPE Digital Resiliency Framework based on NIST guidelines

- New HPE Shadowbase capabilities work to rapidly **RECOVER** critical data
- Current focus is on **detection** and **recovery**, with future capabilities directed at **identification** and **prevention** (and hence **avoidance**)

Digital resilience using air-gapped, immutable storage

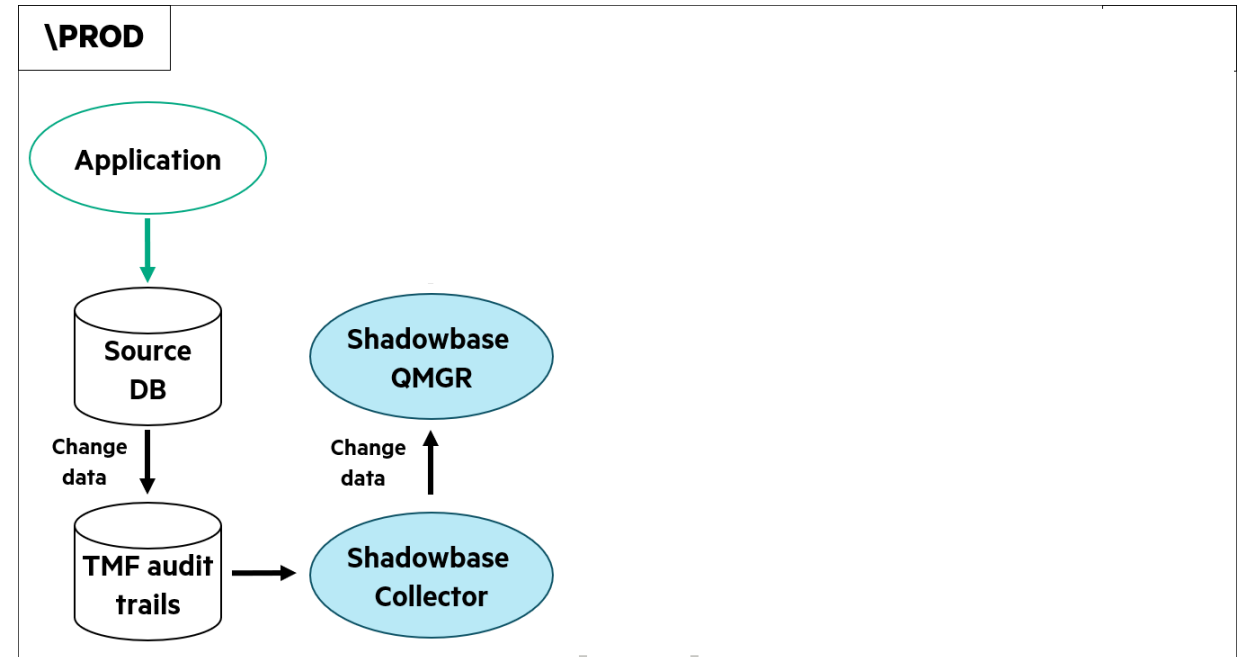
HPE Shadowbase Queue Manager (QMGR)

- **Q Files**

- Contain queued change data
- Are **fingerprinted and validated**
- Enables more data management controls

- Detects **man-in-the-middle (MiTM) attacks** between key processes

- Q Files with invalid fingerprints are halted and removed from \RRS (Ransomware Recovery System)



Watch the demo at HPE booth

Digital resilience using air-gapped, immutable storage

HPE Shadowbase Queue Manager (QMGR)

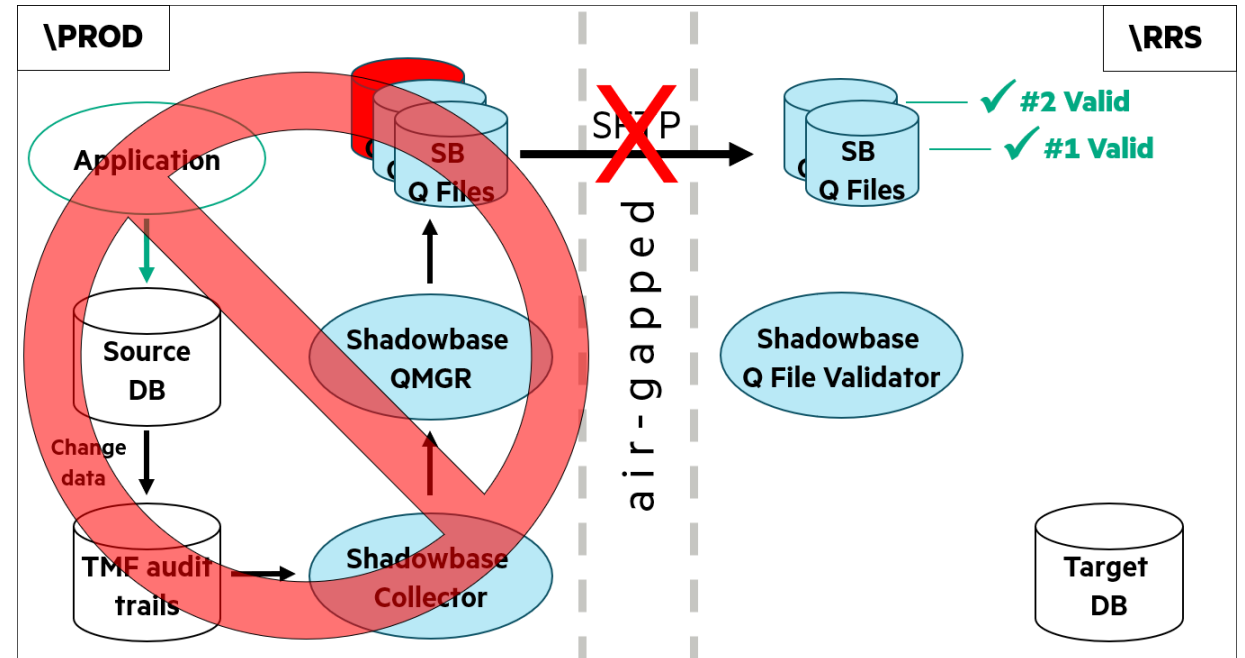
- **Q Files**

- Contain queued change data
- Are **fingerprinted and validated**
- Enables more data management controls

- Detects **man-in-the-middle (MiTM) attacks** between key processes

- Q Files with invalid fingerprints are halted and removed from \RRS (Ransomware Recovery System)

- **Enable recovery to a point-in-time**



Watch the demo at HPE booth

Digital resilience using air-gapped, immutable storage

HPE Shadowbase Queue Manager (QMGR)

- **Q Files**

- Contain queued change data
- Are **fingerprinted and validated**
- Enables more data management controls

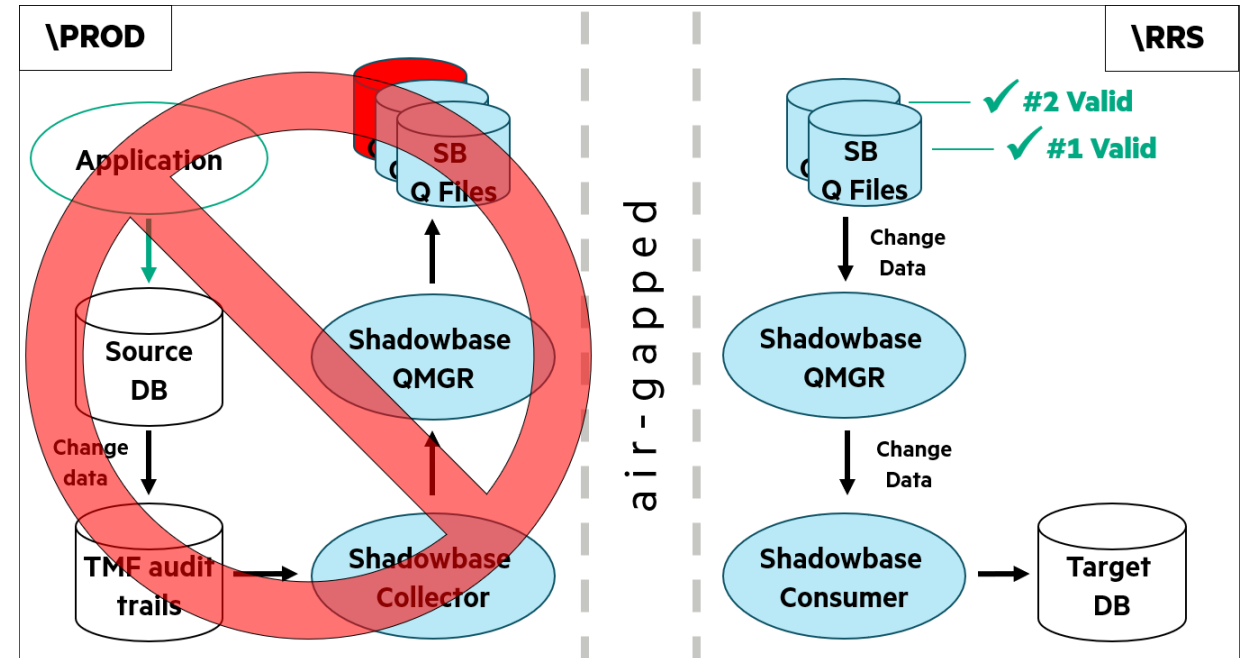
- Detects **man-in-the-middle (MiTM) attacks** between key processes

- Q Files with invalid fingerprints are halted and removed from \RRS (Ransomware Recovery System)

- **Enable recovery to a point-in-time**

- **Build “data vaults”** (not pictured)

- Optionally store data off-platform into a DB or Q files



Watch the demo at HPE booth

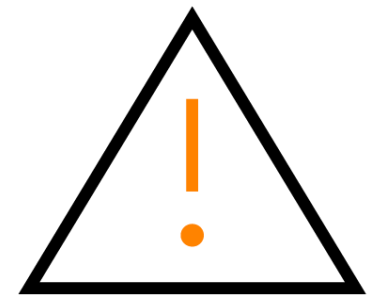
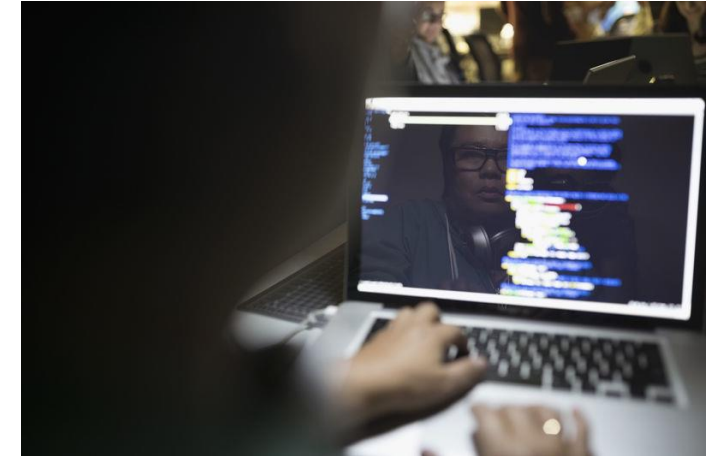
New & future features



HPE Shadowbase releases in 2023

For full details, visit ShadowbaseSoftware.com/Releases/

- HPE NonStop Shadowbase
 - Released March 2023, Version 6.720 (T1122^ABC)
- HPE NonStop Shadowbase Compare
 - Released March 2023, Version 6.800 (T1122^ABB)
- HPE Shadowbase for Other Servers
 - Released June 2023, Version 6.800 T1124-T1130 (multiple SPR's based on platform)
- **DO NOT INSTALL version 6.700 or newer until a new license file is obtained!**
 - A new Shadowbase license file is required to install & run HPE Shadowbase (for NonStop & Other Servers) version 6.700 & newer
 - Contact the *HPE License Manager* to request a new license before upgrading

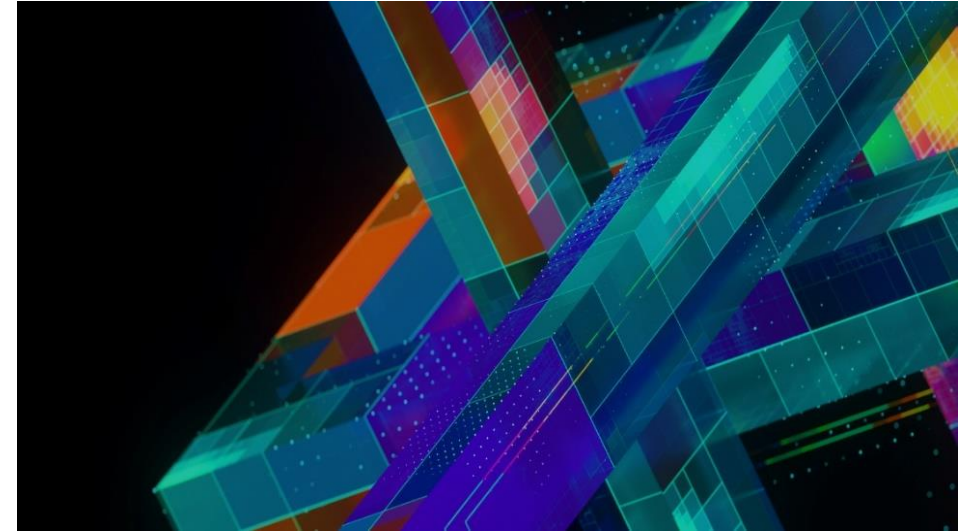


New HPE Shadowbase features (1 of 2)

Available now

Important: Shadowbase users using version 6.600 or earlier should upgrade to 6.700 or later to fix an O/S JulianTimeStamp performance issue

- Simplified SYSKEY replication for SQL/MP & SQL/MX users
- Enhancements to the CHECK DBS command to validate Shadowbase configurations before deployment
- 10-100x performance improvement for integrating HPE NonStop with Cloud environments
- SBMAP data transformation scripting language for Enscribe & SQL/MP users



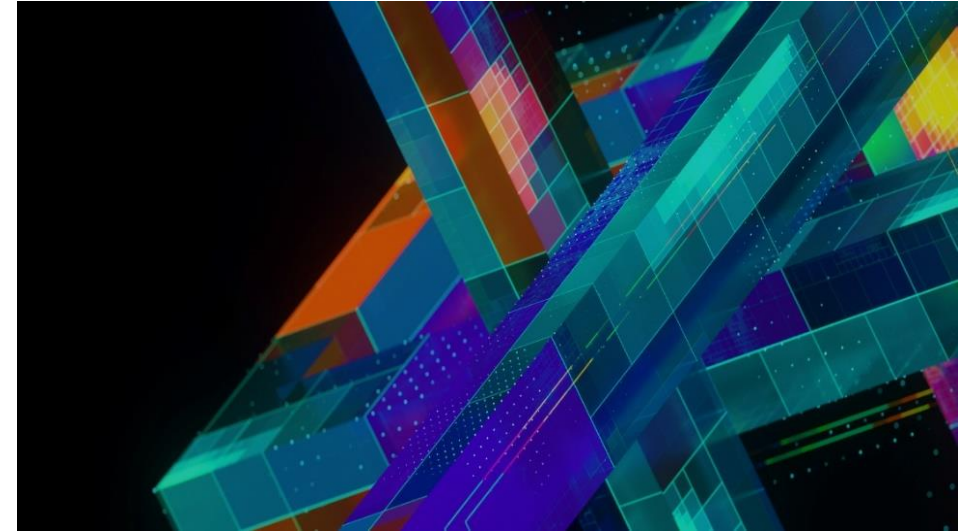
For full details, visit:

ShadowbaseSoftware.com/Releases/

New HPE Shadowbase features (2 of 2)

Available now

- Additional ETL tools
 - Output data into CSVs, flat-files, fixed position, etc.
 - JSON support
- HPE Shadowbase Compare enhancements
 - Enscribe files
 - Wildcard support
 - Iterative compare mechanism
 - Data compression
 - Support for unstructured/queue files
 - Massive performance improvements for large files
 - SQL/MP & SQL/MX tables
 - Wildcard support
 - Automatic parallel execution capability to dramatically improve performance



For full details, visit: ShadowbaseSoftware.com/Releases/

Future features

HPE Shadowbase

- Direct target support for Kafka & AWS APIs
- Enhanced IBM z/OS integration
 - Native Shadowbase port on IBM Mainframe z/OS to support Db2 as a source and target
- Heterogeneous Compare
 - e.g., NonStop to: Oracle, SQL Server, DB2, Sybase, MySQL, PostgreSQL, and others
- HPE Shadowbase Zero Data Loss (ZDL) solution
 - Synchronous Replication enables zero data loss (RPO = 0)
 - Business continuity and data streaming support



Summary



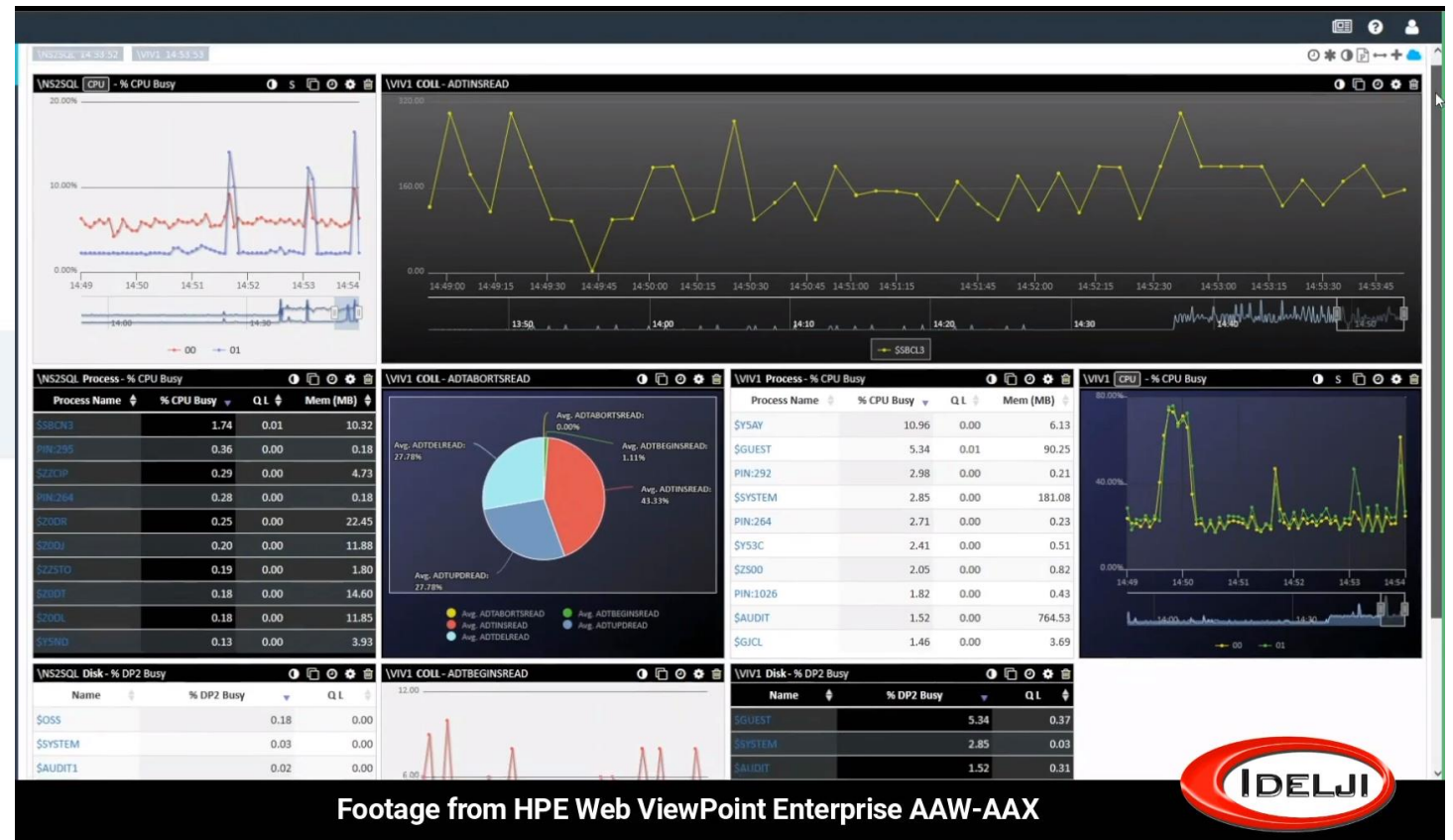
HPE Shadowbase Monitoring via Idelji Web ViewPoint Enterprise Plug-in



Shadowbase Monitor for Web ViewPoint Enterprise - English (US).mp4

vimeo.com

<https://vimeo.com/815503116>



HPE Shadowbase videos

Quick & simple overviews

Solutions Overview

– [Vimeo.com/345756852](https://vimeo.com/345756852) (2 mins)

Business Continuity

– [Vimeo.com/369785276](https://vimeo.com/369785276) (3 mins)

Compare & Repair

– [Vimeo.com/523995684](https://vimeo.com/523995684) (3 mins)

Zero Downtime Migrations

– [Vimeo.com/475133622](https://vimeo.com/475133622) (4 mins)

Data & Application Integration

– [Vimeo.com/382625428](https://vimeo.com/382625428) (4 mins)

Essentials Bundle

– [Vimeo.com/735455234](https://vimeo.com/735455234) (5 mins)



[Vimeo.com/ShadowbaseSoftware](https://vimeo.com/ShadowbaseSoftware)



YouTube.com/@ShadowbaseSoftware4957

Subtitles are available. Play the video slower or faster.

Subtítulos disponibles. Reproduce el video más lento o más rápido.

Subtitle tersedia. Putar video lebih lambat atau lebih cepat.

Sari kata tersedia. Mainkan video dengan lebih perlahan atau lebih pantas.

字幕の利用が可能です。ビデオの再生を遅く、又は早くする事が可能です。

字幕可用。播放 的速度 慢或 快。

자막 사용이 가능하며 동영상을 빠르게 또는 느리게 재생할 수 있습니다.



Wrap-up

- HPE Shadowbase is HPE's strategic *go-forward* data replication & streaming solution
- Globally sold and supported by HPE (and HPE's regional resellers)
- Use HPE Shadowbase for **Business Continuity protection, Data Verification, & Data Streaming**
- The right people + the right solutions: *that's where the magic happens™*



Momentum Technology
Partner of the Year 2019

HPE Sessions of Interest

VT4

- HPE Shadowbase: Maximize NonStop Digital Resilience with Data Replication, Integration, and Validation
 - Tuesday, 1-2:00 PM, Denver 4

CFP1 – **Customer Talk!**

- Major UK Bank Migrates its BASE24™ Application to Active/Active for Continuous Availability
 - Wednesday, 10:30-11:30 AM, Denver 1-2

TB67

- New HPE NonStop Business Continuity & Data Integration Features and Roadmap
 - Wednesday, 2:45-3:45 PM, Denver 1-2

VT5

- Ransomware Protection and Data Recovery
 - Wednesday, 4-5:00 PM, Denver 1-2



Survive a Ransomware Attack!

HPE Shadowbase Ransomware demo

Survive a Ransomware Attack!

HPE solutions can help protect and recover your mission critical NonStop systems and data from malware and Ransomware

- Rapidly restore systems and recover data
- Air-gapped backups
- Immutable storage
- 3-2-1-1 backup rule
- Preserve corrupted environment for forensics

Demo at HPE booth



Hewlett Packard Enterprise

GRAVIC
HPE Shadowbase

Stop by the booth & watch the demo!

Follow us on

LinkedIn



Thank you

Product-related questions: ask your HPE Sales team

Technical-related questions: SBProductManagement@Gravic.com

Marketing-related questions: PRHolenstein@Gravic.com



HPE Shadowbase videos

In various languages



HPE Shadowbase videos

Quick & simple overviews

Overview

- Real-time data replication and streaming for a NonStop world



[Vimeo.com/345756852](https://vimeo.com/345756852)



Business Continuity

- Eliminate unplanned downtime for extreme availability



[Vimeo.com/369785276](https://vimeo.com/369785276)



Zero Downtime Migration

- Eliminate planned downtime for upgrades, migrations, and platform refreshes



[Vimeo.com/475133622](https://vimeo.com/475133622)



HPE Shadowbase videos

Quick & simple overviews

Data & Application Streams

- Integrate one database/application with another



[Vimeo.com/382625428](https://vimeo.com/382625428)



Compare & Repair

- Source and target database validation



[Vimeo.com/523995684](https://vimeo.com/523995684)



Essentials

- Manage, monitor, and transform your data



[Vimeo.com/475133622](https://vimeo.com/475133622)



HPE Shadowbase videos

Quick & simple overviews

Overview

- Real-time data replication and streaming for a NonStop world



[YouTube.com/Watch?v=pHu9qX3PII0](https://www.youtube.com/watch?v=pHu9qX3PII0)



Business Continuity

- Eliminate unplanned downtime for extreme availability



[Youtube.com/Watch?v=cyoBd-iAPuc](https://www.youtube.com/watch?v=cyoBd-iAPuc)



Zero Downtime Migration

- Eliminate planned downtime for upgrades, migrations, and platform refreshes



[Youtube.com/Watch?v=7MnmKr8a8zQ](https://www.youtube.com/watch?v=7MnmKr8a8zQ)



HPE Shadowbase videos

Quick & simple overviews

Data & Application Streams

- Integrate one database/application with another



[Youtube.com/Watch?v=3QtvqB3qtdQ](https://www.youtube.com/watch?v=3QtvqB3qtdQ)



Compare & Repair

- Source and target database validation



[Youtube.com/Watch?v=RFYjL_zhhAU](https://www.youtube.com/watch?v=RFYjL_zhhAU)



Essentials

- Manage, monitor, and transform your data



[Youtube.com/Watch?v=5iU2o1JDo-c](https://www.youtube.com/watch?v=5iU2o1JDo-c)

